

MV: BELLE CONFIDENCE

General

Class	NKK
Class notation	BCM BC-XII,GRAB
Ship type	DHBC
Year built	FEB 2025
Yard	Hakodate Dock
DD due	FEB 2030
SS due	FEB 2030

Flag	Portugal
Registry	Madeira
Reg. nr.	TBA
Call Sign	CQ2290
IMO nr.	9989924
Telex	425503967
Phone	+30 210 444 7661
Email	belleconfidence@feet.hellasconfidence.gr

Speed & Consumption

Laden	abt.13.0 kts on abt.18.0 IFO + abt.0.1 mt LSMGO
Eco (WOG)	abt.12.0 kts on abt.15.5 IFO + abt.0.1 mt LSMGO
Port Idle	abt.2.5 mt IFO + abt.0.1 mt LSMGO
Port WWW	abt.4.5 mt IFO + abt.0.1 mt LSMGO

Vessel consumes ULSGO when in Nox Control area, during manoeuvring and sailing in narrow waterways and canals. Speed / Cons. upto windforce BF 4, max. wave height 1.25 m, max. swell height 2.00 m, no adverse current, no influence of swell and even-keel condition.

Bunker specs: IFO ISO 8217:2017 (E) RMG 380 / ULSGO: ISO 8217:2017 (E) DMA (max 0.1% Sulphur) Sulphur specs and each delivery and burning of specific types (grades) of bunkers always to comply with MARPOL regulations a/o EU directives a/o USA a/o any other national regulations including latest amendments

Principal dimensions

Length over all	182.94	m
Breadth moulded	31.60	m
Depth moulded	14.80	m
Summer draft	10.39	m
Summer dwt	40,381	MT
TPC (summer)	51.9	t/cm
GT/NT	24465/12991	T
Lightweight	8475	T
Suez	TBA	T
Panama	TBA	T

W/L-H/c Summer	TBA	m
W/L-H/c Ballast mid.	TBA	m
Keel – Top H/c	16,50	m
Keel – Top of mast	40.98	m
VLSFO cap. (85%)	1186	m ³
ULSGO cap. (85%)	374	m ³
FW capacity (100%)	286	m ³
Ballast cap. (100%)	15,286	m ³
Slop tanks (CH wash)	205	m ³
Grey water holding tk	82	m ³

Operational restrictions

No mixing of new bunkers with bunkers already onboard.
Vessel is only allowed to work single hook on a single hatch
Constants could be affected due to vessel retaining onboard of hold cleaning water and/or grey water as per MARPOL regulations.

Bunker tank capacities could be affected due to vessel having to keep different IFO and ULSGO grades separated as a consequence of compliance with Marpol regulations a/o EU directives a/o USA a/o any other national regulations including latest amendments.

This vessel is member of an independent fuel testing system (Intertek Lintec). Charterers or their representatives are always at liberty to witness the sampling during any bunkering of the vessel under the charter and any discrepancies found between supplier's sample and Intertek Lintec sample then the Intertek Lintec sample to be final and binding. As long as the analysis results of the fuel oil onboard has not been received and approved by Owners, the vessel may have to use ULSGO instead.

Vessel uses UREA and NaOH in NOx control area, charterers should consider the availability of SCR and EGR treatment product in their trade.

Cargospaces

Cap. (cuft)	Grain	Bale
C/H #1	259829	257702
C/H #2	392689	381076
C/H #3	392689	381200
C/H #4	392689	381200
C/H #5	344096	334391
Total	1781992	1735569

Floor space	L x B	Hatch Size lxb
C/H #1	27.2 m x 8.4 m (FWD) x 27.6 m (AFT)	16 m x 15.3 m
C/H #2	29.4m x 27.6m	21.0m x 22.0m
C/H #3	29.4m x 27.6m	21.0m x 22.0m
C/H #4	29.4m x 27.6m	21.0m x 22.0m
C/H #5	26.88 m x 27.6 m (FWD) x 13.44 m (AFT)	21.0m x 22.0m

drft(m)	Deadweight (t)
10.39	Summer 40381
10.60	Trop. 41505
10.84	TropF. 41481
10.62	Fresh 40382
10.17	Winter 39261

Ventilation	Nat.
Airchanges	N/A
CO2 fitted	Fitted
A60 bkhd	Fitted
Smoke det.	N/A
Aussie fitted	Fitted
Dehumidifier	N/A

*Note: In case of heavy cargoes to be loaded, the maximum quantity is to be in accordance with vessel's loading and stability booklets.

Strength

	CH#1	CH#2	CH#3	CH#4	CH#5		
Hatchcovers	TBA	TBA	TBA	TBA	TBA	t/m ²	*observe load manual
Weatherdeck	TBA	TBA	TBA	TBA	TBA	t/m ²	*Except betw. hatches
Tanktop	40	35	35	35	35	t/m ²	*Local strength
Tanktop	20.47	11.81	20.50	11.81	16.67	t/m ²	*Uniform distributed
Steel coils	Standard coil loading condition – 2 tiers x 25 T coils (dim. W1.84m x L1.5m), 3 dunnages						
*Note 1: Alternate hold loading condition (Nos. 2 & 4 may be empty)							
*Note 2: Other coil loading conditions subject to owners approval of local stress calculations							

Deck equipment

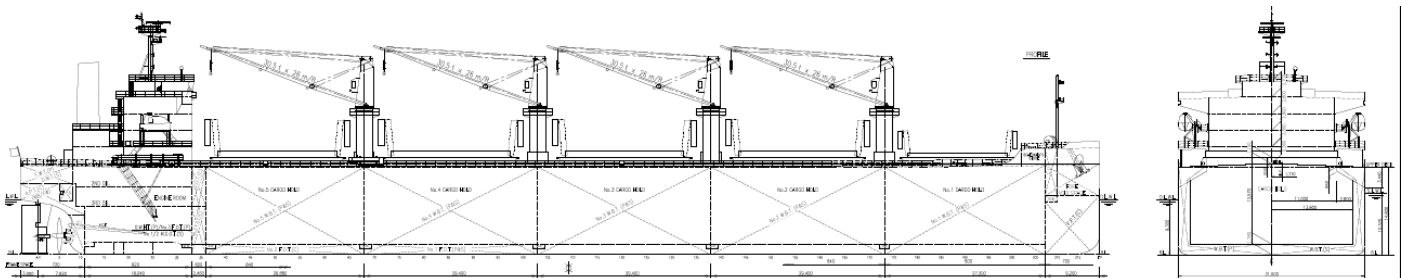
Hatch type	Hydr. End-folding type, DS
Maker	MacGregor
Cargo gear type	Electro hydr. 30.5t x 4 cranes
Maker	MHI
Outreach	9.00 mtr
Grab handling	24 max. grab(bucket)+cargo
Grabs fitted	N/A
(de)ballast Cap.	Max. (1200)1000 m ³ /h

Features

ITF fitted	Yes
Log fitted	No
WBTS fitted (USCG approved)	Yes
Lakes fitted	No
Suitable for grab discharge	Yes

Machinery details

Main engine	J-ENG 6UEC42LSH-Eco-D3-EGR
NCO	4290 KW @ 95.7 rpm
Aux. engines	Yanmar 6 EY18ALWS – 3 sets
Electrical	700KVA/ 450V/ 60 Hz
Freshwater generator	Max. 15t/day



All details "about" given in good faith, without guarantee.