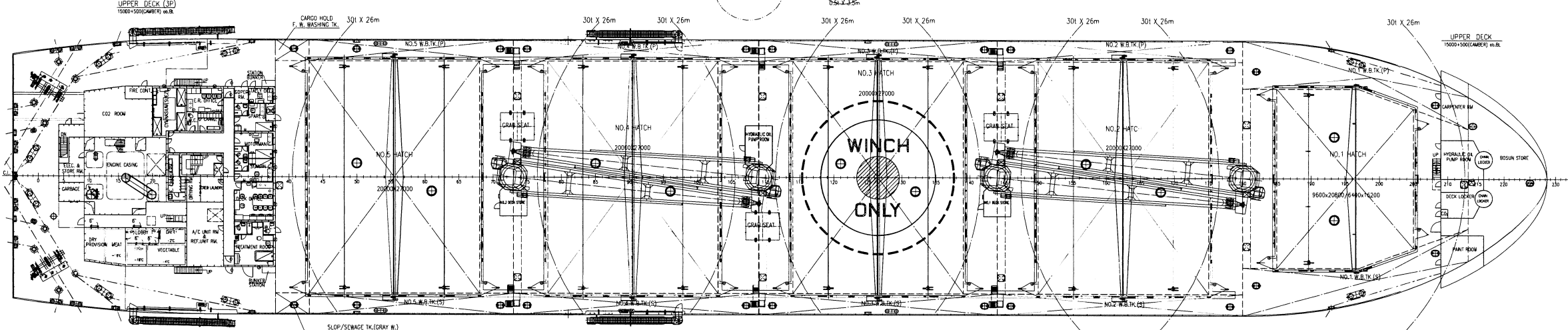
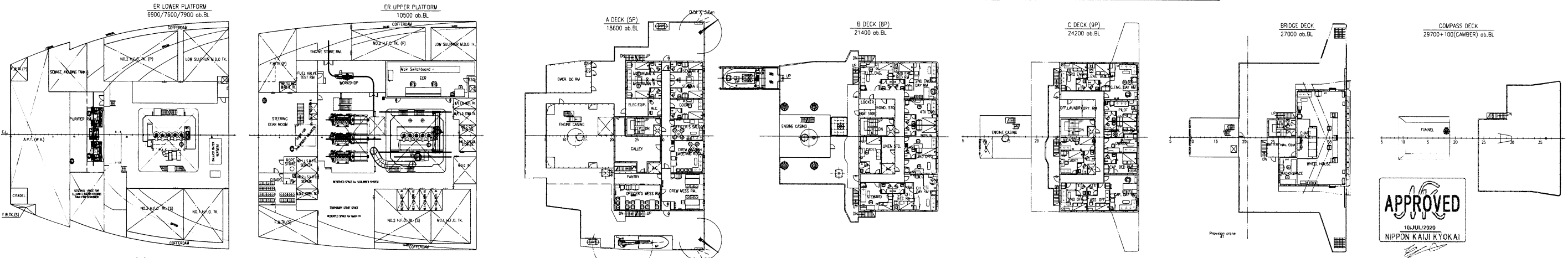
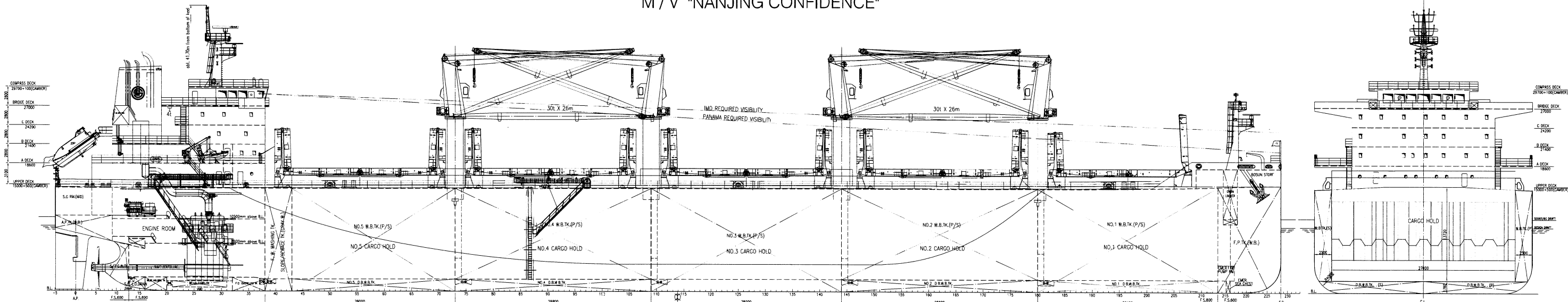


M/V "NANJING CONFIDENCE"

SC4674(D)G1-100-05

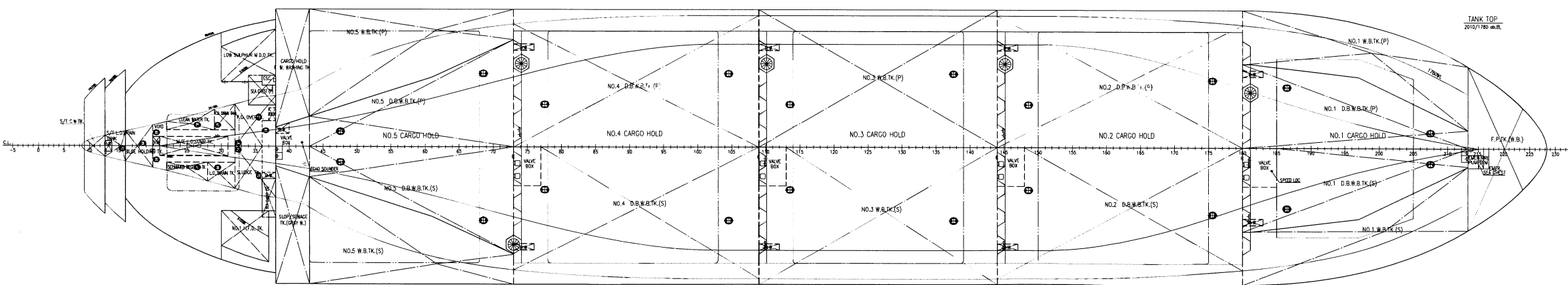


ABBREVIATIONS

- BL : BASE LINE
- CLL : CENTER LINE
- A.P. : AFTER PERPENDICULAR
- F.P. : FORE PERPENDICULAR
- F.S. : FRAME SPACING
- W.B.TK. : WATER BALLAST TANK
- D.B.W.B.TK. : DOUBLE BOTTOM WATER BALLAST TANK
- F.P.TK. : FORE PEAK TANK
- A.P.TK. : AFTER PEAK TANK
- F.W.TK. : FRESH WATER TANK
- S/T.C.W.TK. : STAFF TUBE COOL WATER TANK
- H.F.O. : HEAVY FUEL OIL
- M.D.O. : MARINE DIESEL OIL
- L.S.M.D.O. : LOW SULPHUR MARINE DIESEL OIL
- L.O. : LUBRICATING OIL
- B.W. : BLUZE WELL
- M/E. : MAIN ENGINE
- S.C.R. : STEERING GEAR ROOM
- C.T. : CABLE TUBE
- A.C. : AIR CONDITION
- ESC. : ESCAPE TROUGH
- W.H.TK. : WATER HOLDING TANK

PRINCIPAL PARTICULARS

LENGTH (O.A.)	179.95 m	GROSS TONNAGE	25606
LENGTH (B.P.)	177.0 m	NET TONNAGE	13035
BREADTH (MLD)	32.0 m	PARTICULARS OF PROPELLER:	
DEPTH (MLD)	15.0 m	NUMBER OF BLADES	4
DESIGN DRAFT	9.5 m	PROPELLER DIAMETER	6.2 m
SCANTLING DRAFT	10.75 m		
DEADWEIGHT (AT DESIGN DRAFT)	33560.9 t		
DEADWEIGHT (AT SCANTLING DRAFT)	40266.0 t		
MAIN ENGINE	MAN 5550ME-B9.3 Tier II 1set		
	SMCR 6100kW x 99r/min		
	CSR(75%SMCR) 4575kW x 89.9r/min		
SERVICE SPEED	(T=9.5 m, CSR, 15% S.M.)	abt. 14.0 kn	
RANGE		abt. 18,000 n.mile	
COMPLEMENT		24 Persons + 1 Pilot	
CLASSIFICATION	NK N5* (CSR, BC-ABC-XII, GRAB 20, P5PC-WBT)(ESP)(WS)(PSCM)(EA)(BWT5)(HM)(EEDI-p1)		
	MNS* (MO)		
	Strengthened for heavy cargo loading where holds nos.2 & 4 may be empty		
IMO NUMBER	9769697		



名称	符号
船名	船名
船型	船型
船级	船级
船主	船主
船东	船东
船主	船主

船名	船名
船型	船型
船级	船级
船主	船主
船东	船东
船主	船主

SHIP NAME: M/V "NANJING CONFIDENCE"
IMO No.: 9769697

DETAILED DESIGN 详细设计	M/V "NANJING CONFIDENCE" 38 00吨级散货船	SC4674(D)G1-100-04
GENERAL ARRANGEMENT PLAN 总体布置图	HULL NO.: DZ-45	
船名	船名	
船型	船型	
船级	船级	
船主	船主	
船东	船东	
船主	船主	