

MV: BENJAMIN CONFIDENCE

General

Class	NKK
Class notation	BCM BC-XII,GRAB
Ship type	DHBC
Year built	FEB 2017
Yard	Hakodate Dock
DD due	MAR 2025
SS due	FEB 2027

Flag	Portugal
Registry	Madeira
Reg. nr.	TEMP670M
Call Sign	CQEB6
IMO nr.	9713234
Telex	425502276
Phone	+870 771301757
Email	benjaminconfidence@gmailplus.com

Speed & Consumption

Laden	abt. 13.0 kts on abt.20.0 IFO + abt.0.1 mt LSMGO
Eco (WOG)	abt. 12.0 kts on abt.18.5 IFO + abt.0.1 mt LSMGO
Port Idle	abt.2.0 mt IFO + abt.0.1 mt LSMGO
Port WWW	abt.4.5 mt IFO + abt.0.1 mt LSMGO

Vessel consumes ULSGO when manoeuvring and sailing in narrow waterways and canals. Speed / Cons. upto windforce BF 4, max. wave height 1.25 m, max. swell height 2.00 m, no adverse current, no influence of swell and even-keel condition. Bunker specs: IFO ISO 8217:2017 (E) RMG 380 / ULSGO: ISO 8217:2017 (E) DMA (max 0.1% Sulphur)
Sulphur specs and each delivery and burning of specific types (grades) of bunkers always to comply with MARPOL regulations a/o EU directives a/o USA a/o any other national regulations including latest amendments

Principal dimensions

Length over all	179.96	m
Breadth moulded	30.00	m
Depth moulded	14.05	m
Summer draft	9.822	m
Summer dwt	34,898	MT
TPC (summer)	48.1	t/cm
GT/NT	21502/11191	T
Lightweight	7783	T
Suez Gross/Nett	21408/19931	T
Panama PC/UMS	17931	T

W/L-H/c Summer	5.70	m
W/L-H/c Ballast mid.	10.15	m
Keel – Top H/c	15.75	m
Keel – Top of mast	40.90	m
VLSFO cap. (85%)	937	m ³
ULSGO cap. (85%)	338	m ³
FW capacity (100%)	212	m ³
Ballast cap. (100%)	14661	m ³
Slop tanks (CH wash)	198	m ³

Operational restrictions

No mixing of new bunkers with bunkers already onboard.
Vessel is only allowed to work single hook on a single hatch
Constants could be affected due to vessel retaining onboard of hold cleaning water and/or grey water as per MARPOL regulations.

Bunker tank capacities could be affected due to vessel having to keep different IFO and ULSGO grades separated as a consequence of compliance with Marpol regulations a/o EU directives a/o USA a/o any other national regulations including latest amendments.

This vessel is member of an independent fuel testing system (Intertek Lintec). Charterers or their representatives are always at liberty to witness the sampling during any bunkering of the vessel under the charter and any discrepancies found between supplier's sample and Intertek Lintec sample then the Intertek Lintec sample to be final and binding. As long as the analysis results of the fuel oil onboard has not been received and approved by Owners, the vessel may have to use ULSGO instead

Cargospaces

Cap. (ft ³)	Grain	Bale
C/H #1	215919	213641
C/H #2	345747	335253
C/H #3	345747	335372
C/H #4	345747	335372
C/H #5	304738	295762
Total	1557898	1515400

Floor space	LxB/H/Ba/H(m)	Hatch Size
C/H #1	26.42x7.28/25.96	14.05x14.20
C/H #2	27.86x25.96	20.40x20.40
C/H #3	27.86x25.96	20.40x20.40
C/H #4	27.86x25.96	20.40x20.40
C/H #5	26.17x10.20/25.96	20.40x20.40

drft(m)	Deadweight
9.82	Summer 34898
10.03	Trop. 35881
10.25	TropF. 35860
10.04	Fresh 34897
9.62	Winter 33919

Ventilation	Nat.
Airchanges	-
CO2 fitted	Fitted
A60 bkhd	Fitted
Smoke det.	Fitted
Aussie fitted	Fitted
Dehumidifier	N/A

*Note: In case of heavy cargoes to be loaded, the maximum quantity is to be in accordance with vessel's loading and stability booklets.

Strength

	CH#1	CH#2	CH#3	CH#4	CH#5		
Hatchcovers	NA	NA	NA	NA	NA	t/m ³	
Weatherdeck	4.0	4.0	4.1	4.1	4.1	t/m ³	*Except betw. hatches
Tanktop	20	20	20	20	20	t/m ³	*Local strength
Tanktop	20.47	11.81	20.50	11.81	16.67	t/m ³	*Uniform distributed
Steel Coils	Standard coil loading condition - 2 tiers x 15 T coils (dim. W1.5m x L1.5m) 3 dunnages.						

*Note: Alternate hold loading condition (Nos. 2 & 4 may be empty)
*Note 2: Other coil loading conditions subject to owners approval of local stress calculations.

Deck equipment

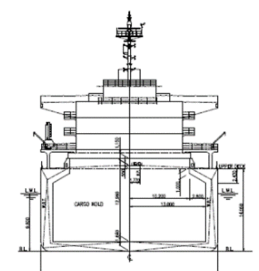
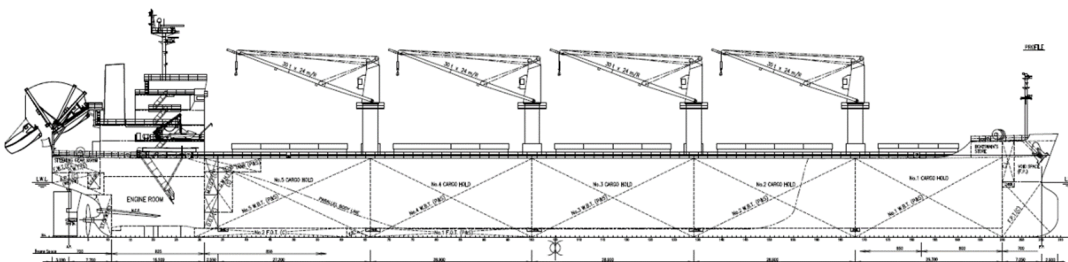
Hatch type	Hydr. End-folding type, DS
Maker	MacGregor
Cargo gear type	Electr/hydr. 30t x 24m x 4 sets
Maker	IHI
Outreach	9.00 mtr
Grab handling	24t max.
Grabs fitted	3 x 10 M ³ remote controlled.
De-ballast Cap.	Max. 1000 M ³ / H

Features

ITF fitted	Yes
Log fitted	No
WBTS fitted (AMS approved)	Yes
Lakes fitted	No
Suitable for grab discharge	Yes

Machinery details

Main engine	MAN B&W 6S46ME-B8.3
NCO	4860 KW @ 104.2 rpm
Aux. engines	Yanmar 6 EY18ALW – 3 sets
Electrical	575KVA/ 450V/ 60 Hz
Freshwater generator	Max. 15 t / day



All details "about" given in good faith, without guarantee.