

## MV: JINLING CONFIDENCE

## General

Class	NKK
Class notation	CSR BC-A BC-XII, GRAB[20]
Ship type	DHBC
Year built	JAN 2017
Yard	Nanjing Dongze
DD due	JAN 2025
SS due	JAN 2027

Flag	Portugal
Registry	Madeira
Reg. nr.	TEMP771M
Call Sign	CQIS
IMO nr.	9798337
Telex	425572811
Phone	+870 773 908 613
Email	jinlingconfidence@gtmailplus.com

## Speed &amp; Consumption

Laden	abt.13 kts on abt.19.5 IFO + abt.0.1 mt LSMGO
Eco (WOG)	abt.12 kts on abt.17.5 IFO + abt.0.1 mt LSMGO
Port Idle	abt.2.0 mt IFO + abt.0.1 mt LSMGO
Port WWW	abt.4.5 mt IFO + abt.0.1 mt LSMGO

Vessel consumes ULSGO when manoeuvring and sailing in narrow waterways and canals. Speed / Cons. upto windforce BF 4, max. wave height 1.25 m, max. swell height 2.00 m, no adverse current, no influence of swell and even-keel condition. Bunker specs: IFO ISO 8217:2017 (E) RMG 380 / ULSGO: ISO 8217:2017 (E) DMA (max 0.1% Sulphur)  
Sulphur specs and each delivery and burning of specific types (grades) of bunkers always to comply with MARPOL regulations a/o EU directives a/o USA a/o any other national regulations including latest amendments

## Principal dimensions

Length over all	179.95	m
Breadth moulded	32.00	m
Depth moulded	15.00	m
Summer draft	10.75	m
Summer dwt	40,320	MT
TPC (summer)	54.4	t/cm
GT/NT	25606/13035	T
Lightweight	9944.7	T
Suez (nett)	23646.08	T
Panama	21298	T

W/L-H/c Summer	6.13	m
W/L-H/c Ballast mid.	10.68	m
Keel - Top H/c	16.90	m
Keel - Top of mast	41.80	m
VLSFO cap. (85%)	802	m <sup>3</sup>
ULSGO cap. (85%)	296	m <sup>3</sup>
FW capacity (100%)	286	m <sup>3</sup>
Ballast cap. (100%)	16765	m <sup>3</sup>
Slop tanks (CH wash)	274	m <sup>3</sup>

## Operational restrictions

No mixing of new bunkers with bunkers already onboard.  
Vessel is only allowed to work single hook on a single hatch  
Constants could be affected due to vessel retaining onboard of hold cleaning water and/or grey water as per MARPOL regulations.

Bunker tank capacities could be affected due to vessel having to keep different IFO and ULSGO grades separated as a consequence of compliance with Marpol regulations a/o EU directives a/o USA a/o any other national regulations including latest amendments.

This vessel is member of an independent fuel testing system (Intertek Lintec). Charterers or their representatives are always at liberty to witness the sampling during any bunkering of the vessel under the charter and any discrepancies found between supplier's sample and Intertek Lintec sample then the Intertek Lintec sample to be final and binding. As long as the analysis results of the fuel oil onboard has not been received and approved by Owners, the vessel may have to use ULSGO instead

## Cargospaces

Cap. (ft <sup>3</sup> )	Grain	Bale
C/H #1	272413	261515
C/H #2	396573	380710
C/H #3	386477	371019
C/H #4	396845	380971
C/H #5	343551	329810
Total	1795860	1724025

Floor space	LxBf/Ba/H(m)	Hatch Size(m)
C/H #1	25.44x4.14/19.42x13.8	9.6x20.8/6.4x16.2
C/H #2	27.87x26.94x13.8	20.00x27.00
C/H #3	27.06x26.93x13.8	20.00x27.00
C/H #4	27.86x26.94x13.8	20.00x27.00
C/H #5	27.89x24.93/4.50x13.8	20.00x27.00

drft(m)	Deadweight(t)
10.75	Summer 40320
10.98	Fresh 40320
10.97	Trop 41532
11.21	TropF 41505
10.53	Winter 39111

Ventilation	Nat.
Airchanges	-
CO2 fitted	Fitted
A60 bkhd	Fitted
Smoke det.	Fitted
Aussie fitted	Fitted
Dehumidifier	N/A

\*Note: In case of heavy cargoes to be loaded, the maximum quantity is to be in accordance with vessel's loading and stability booklets.

## Strength

	CH#1	CH#2	CH#3	CH#4	CH#5		
Hatchcovers	3	3	3	3	3	t/m <sup>3</sup>	*Not designed for cargo
Weatherdeck	3	3	3	3	3	t/m <sup>3</sup>	*Except betw. hatches
Tanktop	25	25	25	25	25	t/m <sup>3</sup>	*Local strength
Max. Mass	5900	8500	8300	8500	7400	t/m <sup>3</sup>	*Homogeneous loading
Steel coils	Standard coil loading: 20 T coils x 2 tiers (dimensions 2.0m x 1.8m) x 3 dunnages*						
*Note 1: Alternate hold loading condition (Nos. 2 & 4 may be empty)							
*Note 2: Other coil loading conditions are subject to owners approval of local stress calculations							

## Deck equipment

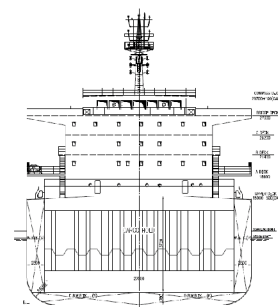
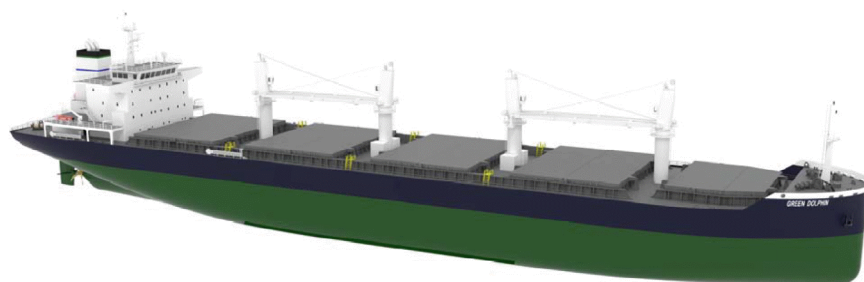
Hatch type	Hydr. End-folding type, DS
Maker	TTS
Cargo gear type	Electro hydr. 30t x 4 cranes
Maker	MHI
Outreach	10.00 mtr
Grab handling	24 T max. grab+cargo
Grabs fitted	3 X 10 M <sup>3</sup> remote controlled
De-ballast Cap.	Max. 700 M <sup>3</sup> / H

## Features

ITF fitted	Yes
Log fitted	No
WBTS fitted (AMS approved)	Yes
Lakes fitted	No
Suitable for grab discharge	Yes

## Machinery details

Main engine	MAN B&W 5S50ME-B9.3
CSR	4575 KW @ 89.9 rpm
Aux. engines	Yanmar 6 EY18ALW - 3 sets
Electrical	600KW/ 450V/ 50 Hz
Freshwater generator	Max. 10t/day



**All details "about" given in good faith, without guarantee.**

OSR Rotterdam B.V. | Fascinatio Boulevard 742 | 2909 VA Capelle a/d IJssel  
Chartering@orient.nl | Phone: +31 (0)10 411 6338