

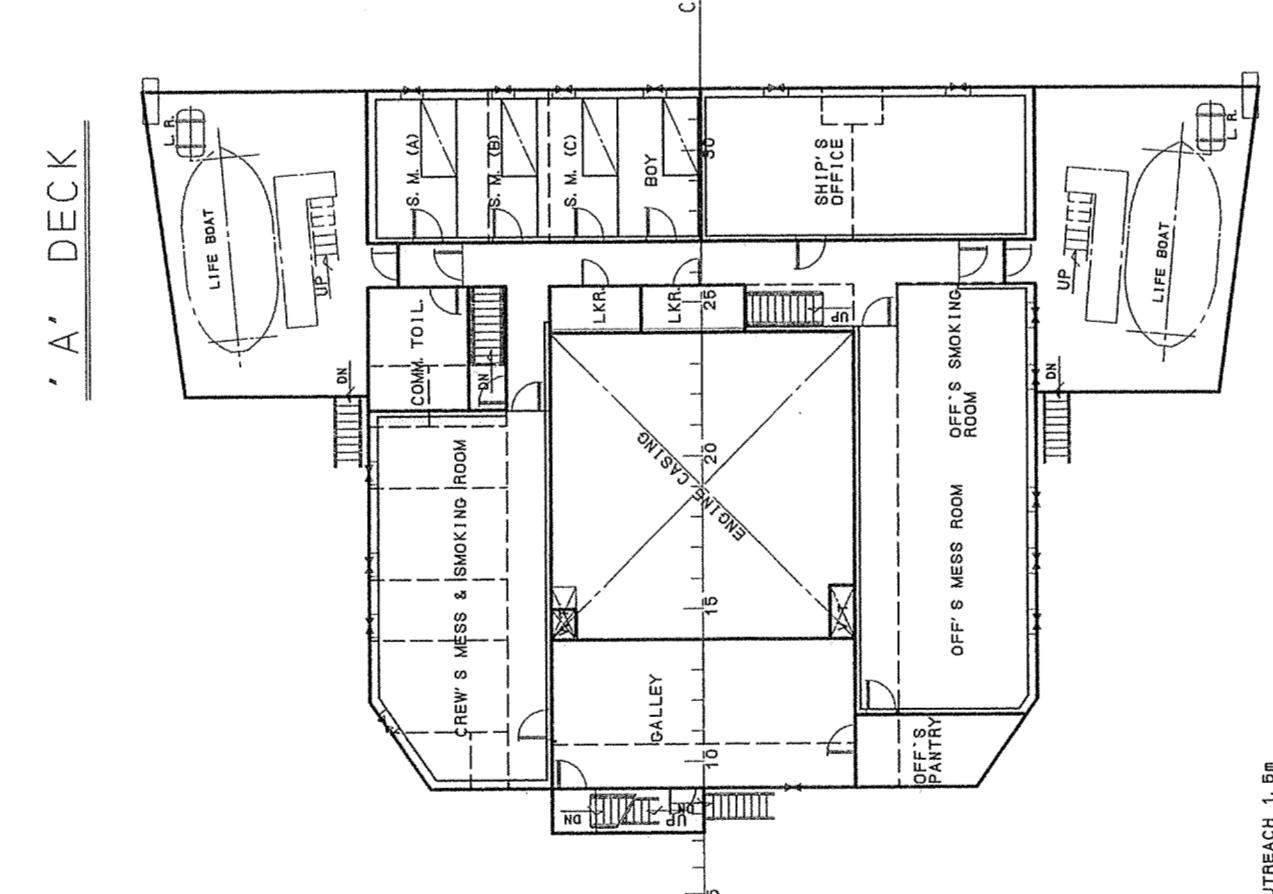
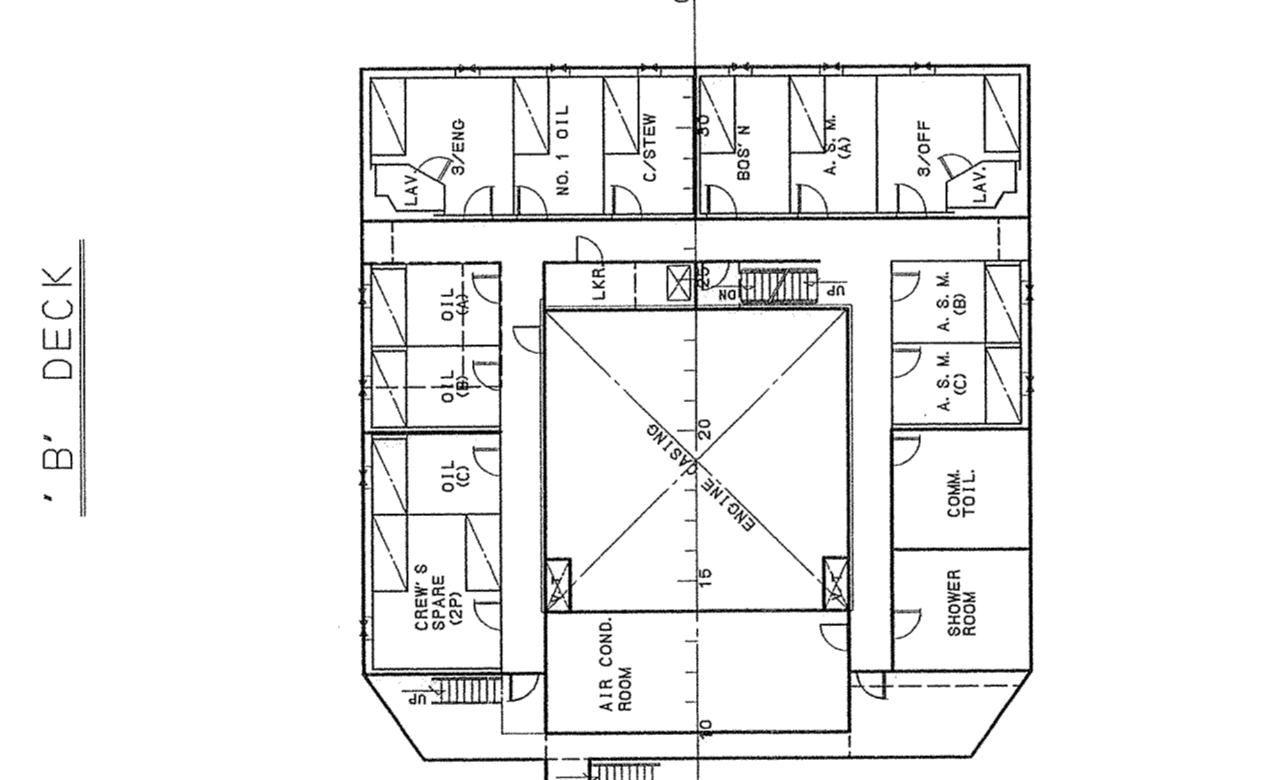
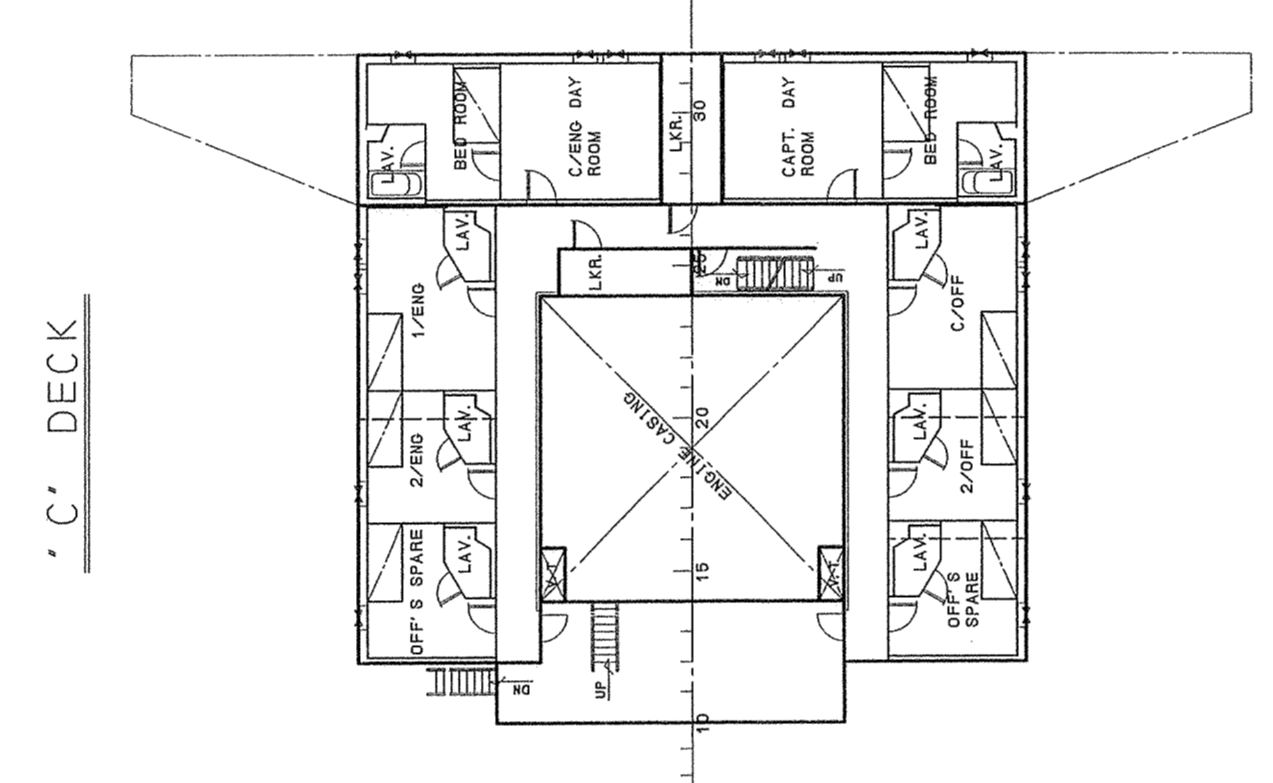
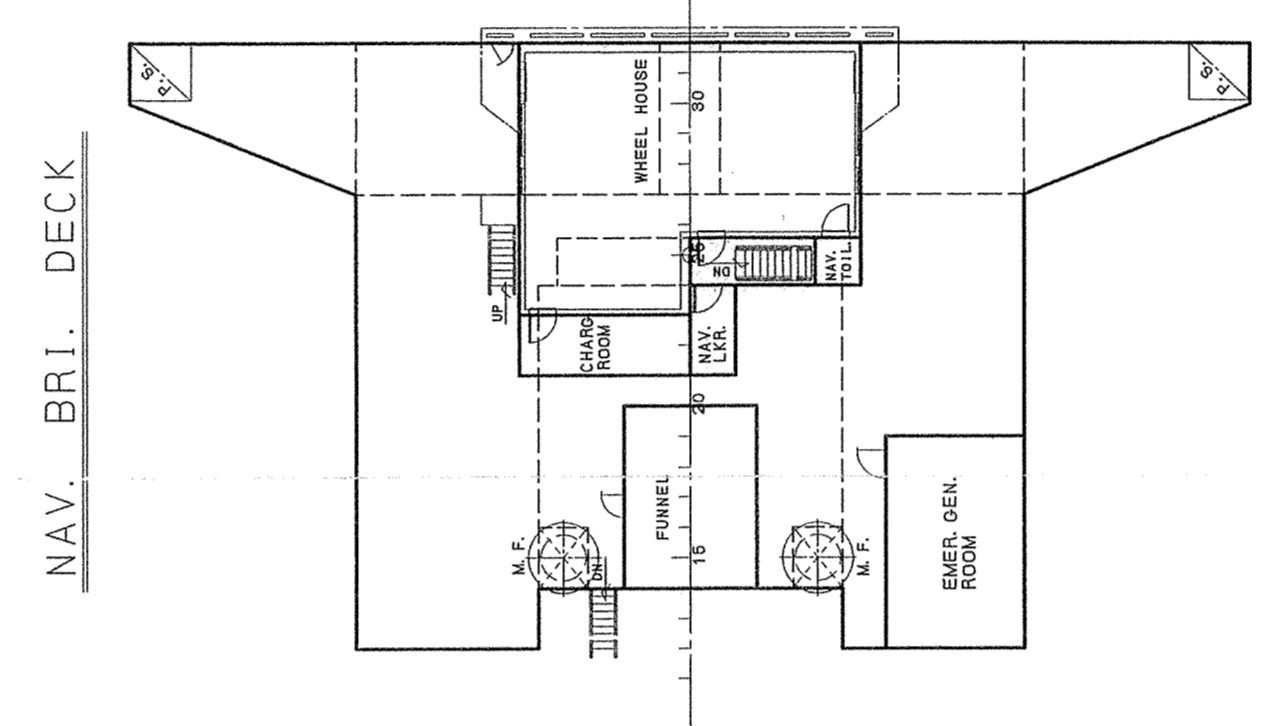
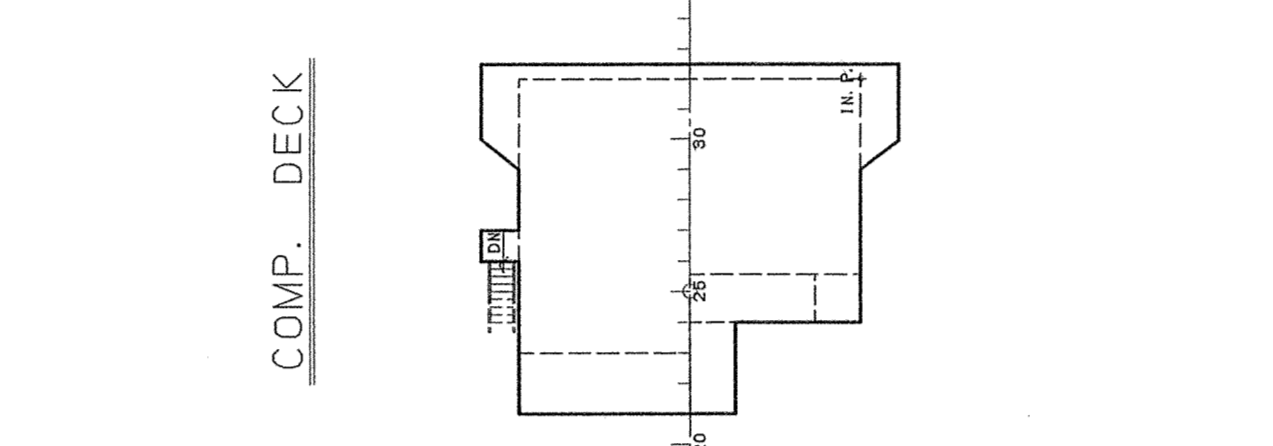
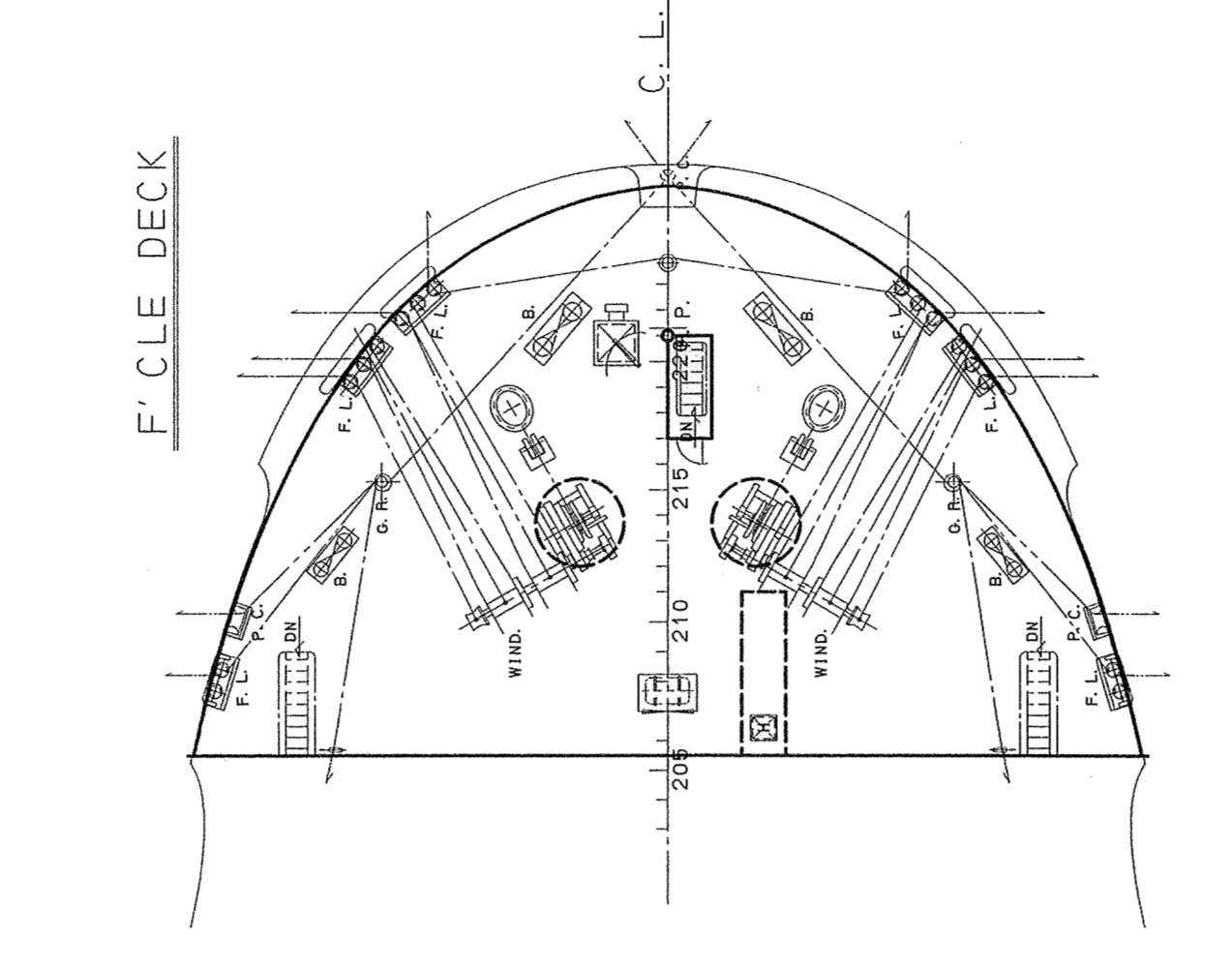
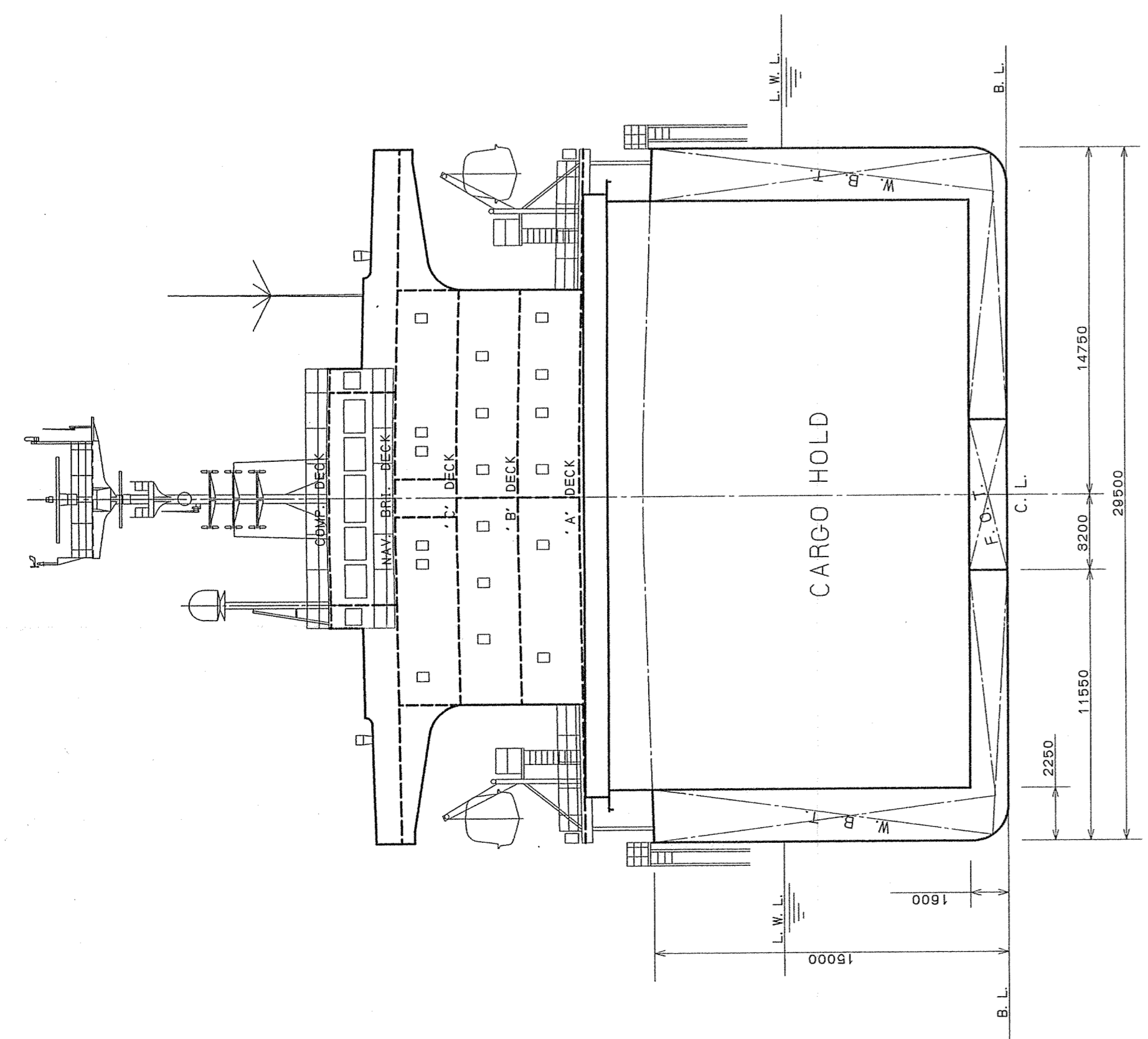
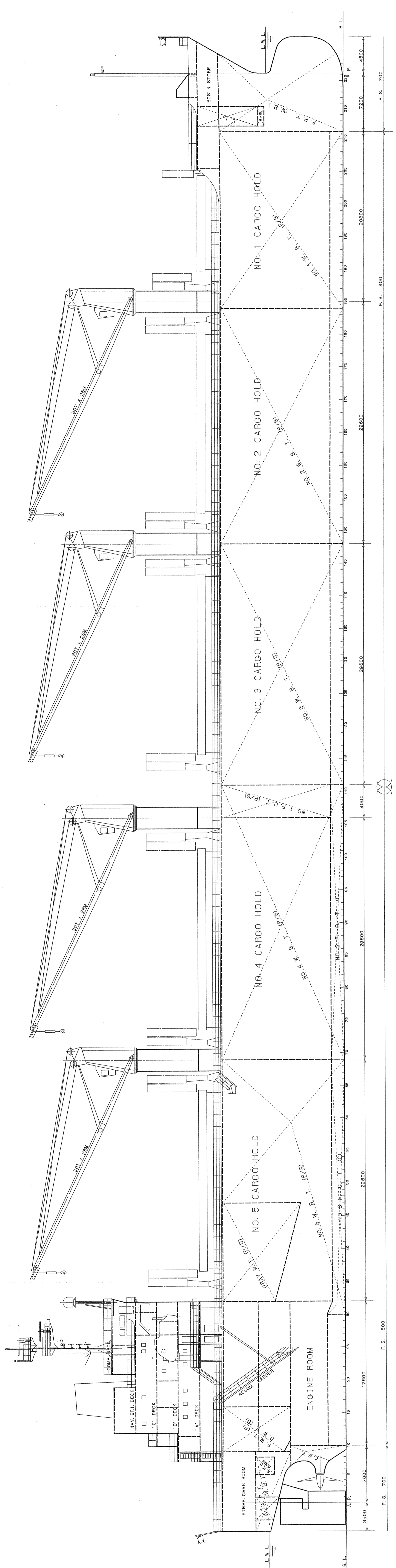
BIBLIOGRAPHY

1118 Nov., 2009
Drawing by SHIPTECH.

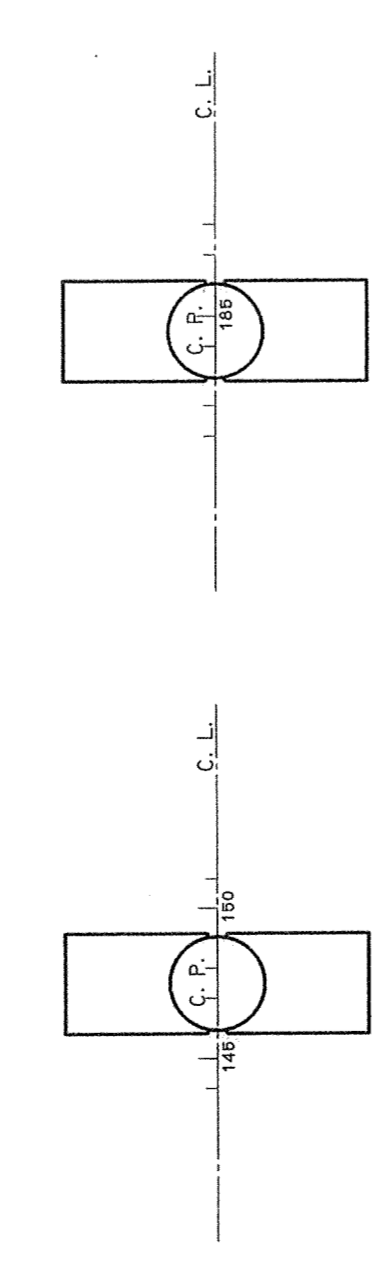
此圖係根據船主提供之資料繪製，其內容與船主提供之資料無異。如有錯誤，概與船主無涉。本圖之所有權歸船主所有，未經船主同意，不得翻印或轉讓。如有翻印或轉讓，概與船主無涉。如有翻印或轉讓，概與船主無涉。

PRINCIPAL DIMENSIONS

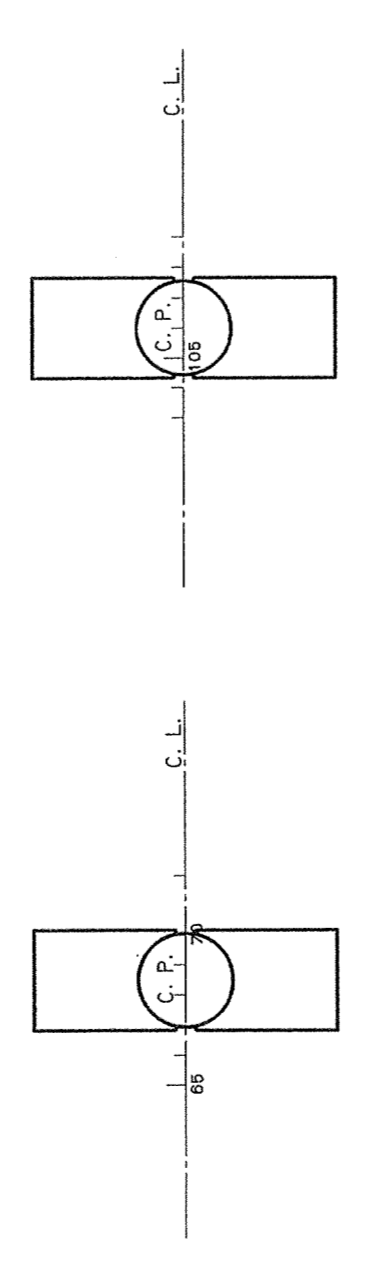
LENGTH (O.A.)	abt. 163.0
LENGTH (B.P.)	175.00
BREADTH (M.L.D.)	28.50
DEPTH	15.00
DRAFT (Gross.)	8.50
DRAFT (excl. t.)	10.38
GROSS TONNAGE (Gross.)	abt. 28,800
DEADWEIGHT (Gross.)	abt. 38,000
DEADWEIGHT (Net)	abt. 35,000
MAIN ENGINE	B&W 6850MC-C (Mar. 17)
M.C.R.	7,900 kW x 121RPM
N.C.R.	6,715 kW x 114 BRPM
COMPLEMENT	25
CLASS	N.K.
SERVICE SPEED (WITH 15% S.M.)	14.9 knots



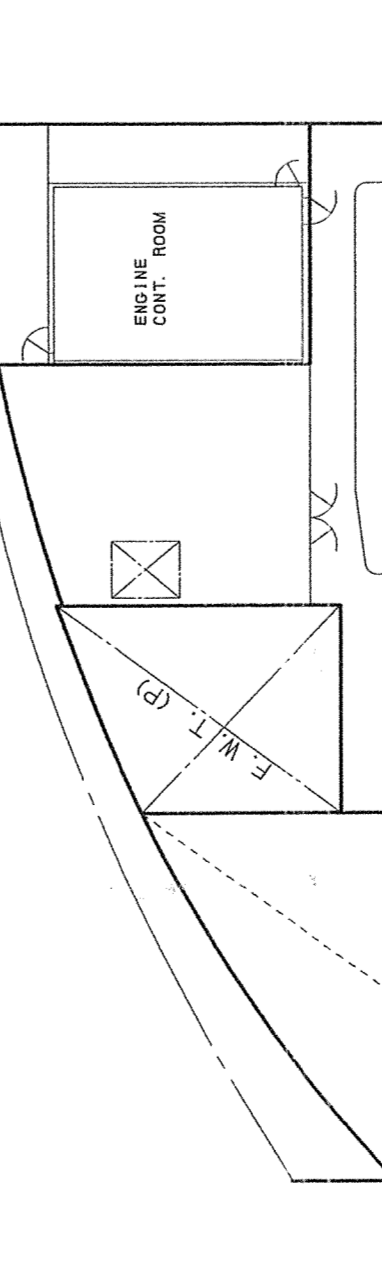
NO. 1 DK. HOUSE TOP



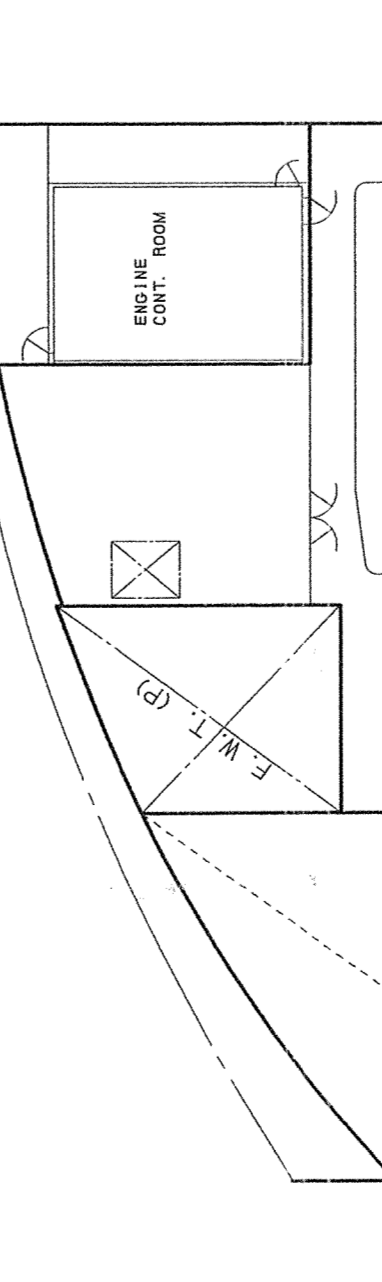
NO. 2 DK. HOUSE TOP



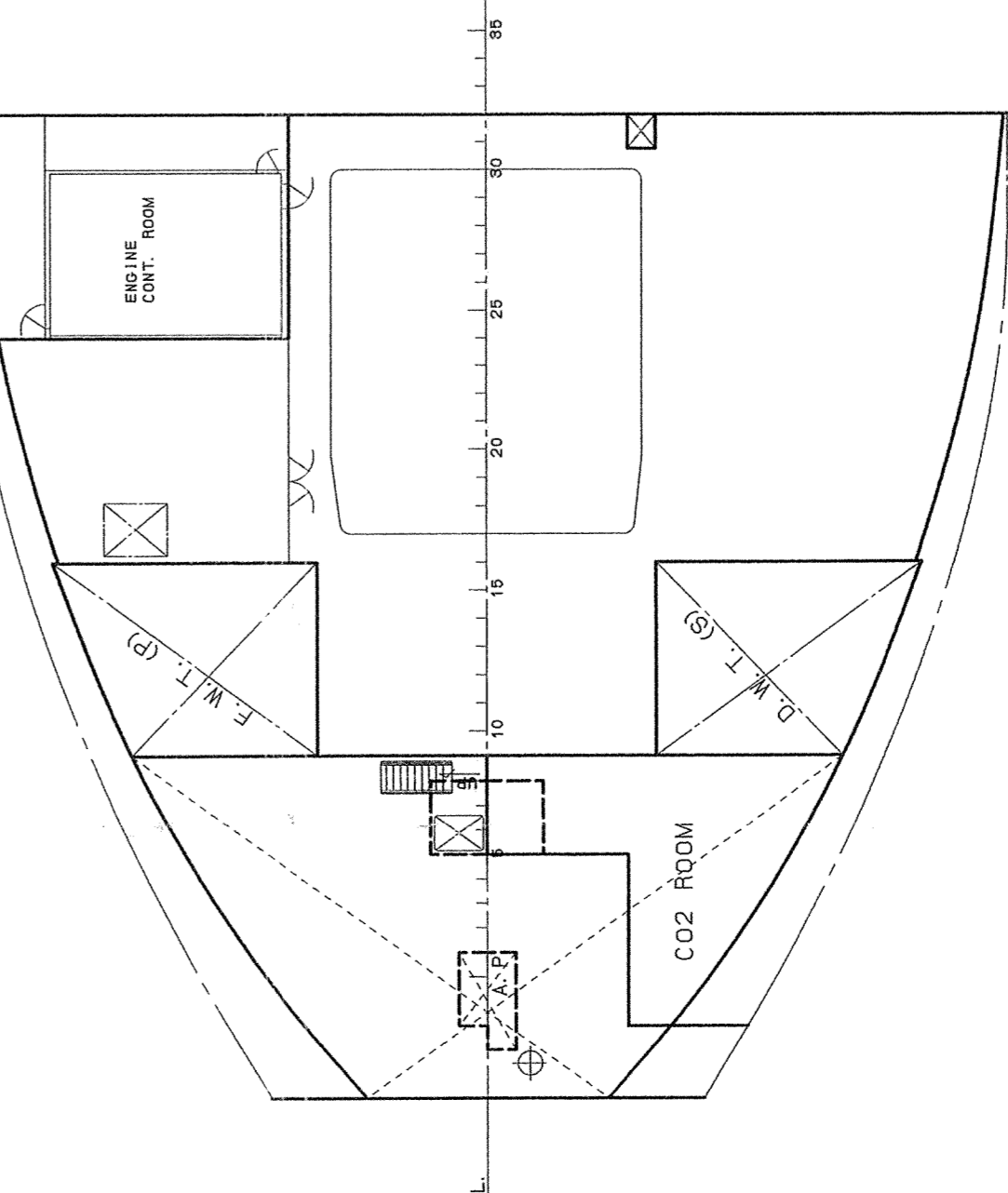
NO. 3 DK. HOUSE TOP



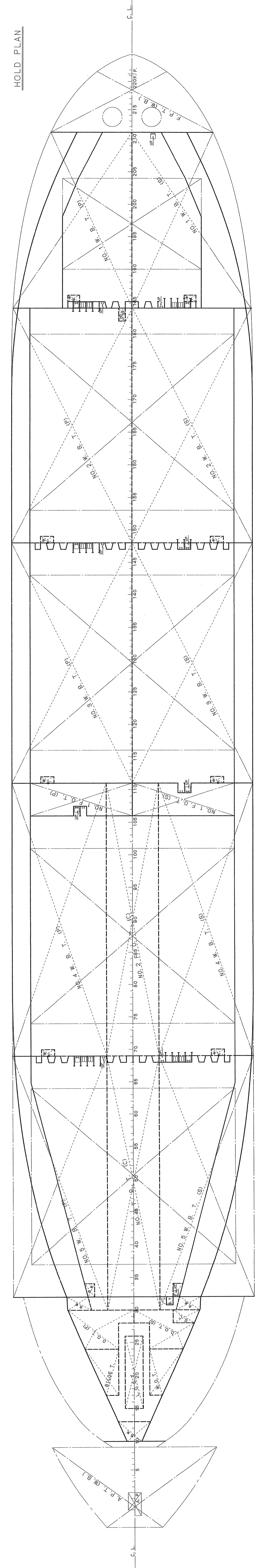
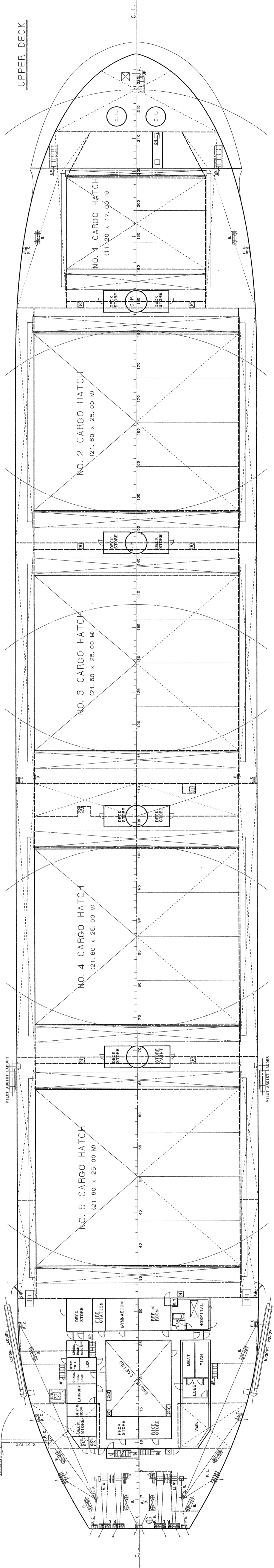
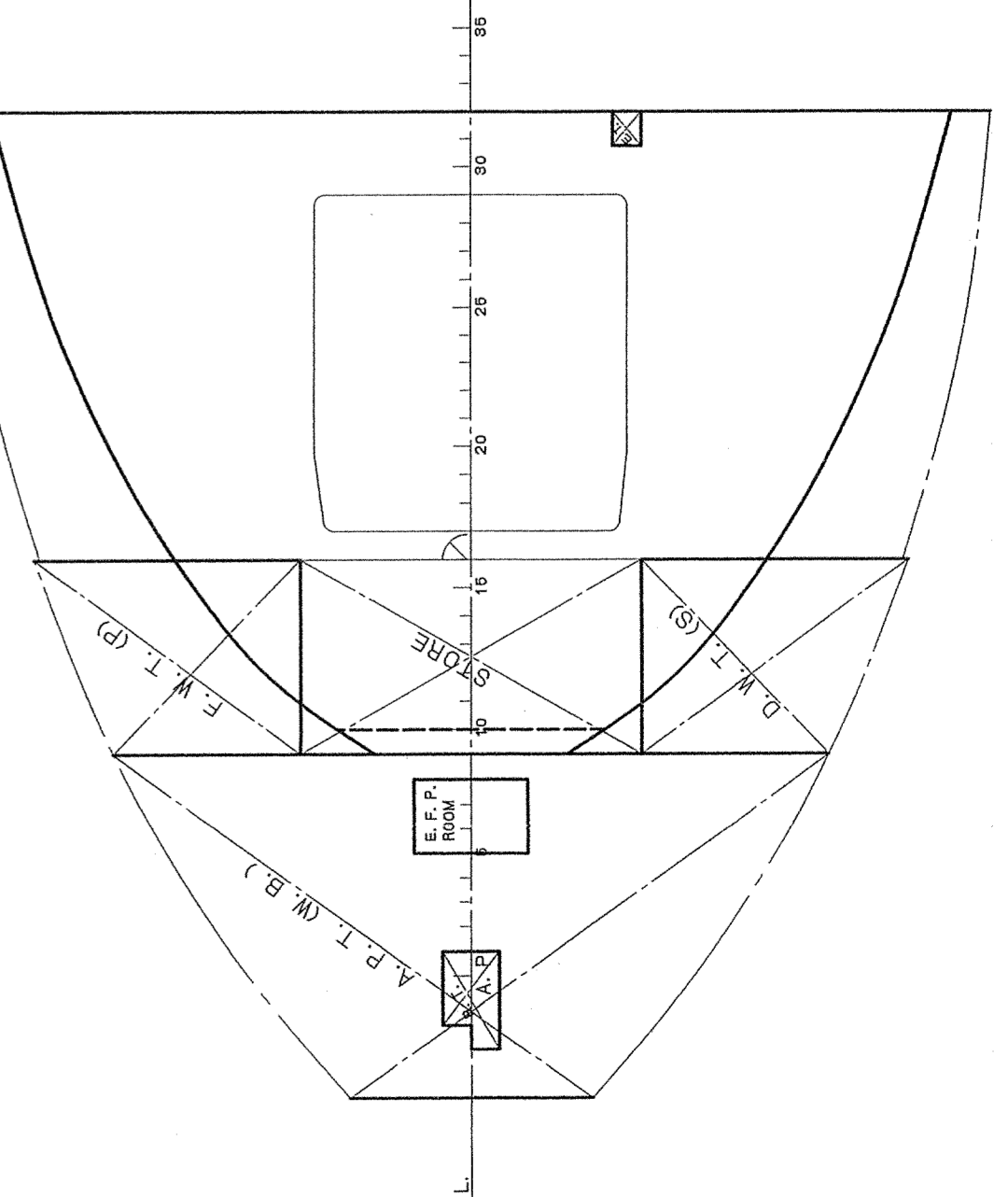
NO. 4 DK. HOUSE TOP



2ND DECK

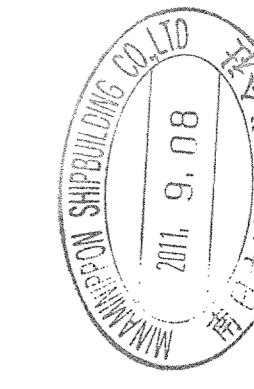


3RD DECK



D/W 38,000 TYP
BOX SHAPED CARGO VESSEL

GENERAL ARRANGEMENT



SHIP No.	M-727
SCALE	1/200
SHIPBUILDING CO., LTD.	
DEPT. CHIEF	
SEC. CHIEF	
DRAWN BY	
DATE DWG.	1118 Nov., 2009
DWG. NO.	80 - 3
DESIG. NO.	2008-0071