

MV: MAAS CONFIDENCE

General

| | |
|----------------|-----------------|
| Class | NKK |
| Class notation | BCM BC-XII,GRAB |
| Ship type | DHBC |
| Year built | JULY 2016 |
| Yard | Hakodate Dock |
| DD due | JULY 2021 |
| SS due | JULY 2021 |

| | |
|-----------|------------------------------|
| Flag | Portugal |
| Registry | Madeira |
| Reg. nr. | TEMP568M |
| Call Sign | CQAG5 |
| IMO nr. | 9713210 |
| Telex | 425501952 |
| Phone | +870 7713 09607 |
| Email | maasconfidence@gmailplus.com |

Speed & Consumption

| | |
|-----------|---|
| Laden | abt.13.0 kts on abt.21.5 IFO + abt.0.1 mt LSMGO |
| Eco (WOG) | abt.12.0 kts on abt.19.5 IFO + abt.0.1 mt LSMGO |
| Port Idle | abt.2.0 mt IFO + abt.0.1 mt LSMGO |
| Port WWW | abt.4.5 mt IFO + abt.0.1 mt LSMGO |

Vessel consumes ULSGO when manoeuvring and sailing in narrow waterways and canals. Speed / Cons. upto windforce BF 4, max. wave height 1.25 m, max. swell height 2.00 m, no adverse current, no influence of swell and even-keel condition. Bunker specs: IFO ISO 8217:2017 (E) RMG 380 / ULSGO: ISO 8217:2017 (E) DMA (max 0.1% Sulphur)
Sulphur specs and each delivery and burning of specific types (grades) of bunkers always to comply with MARPOL regulations a/o EU directives a/o USA a/o any other national regulations including latest amendments

Principal dimensions

| | | |
|-----------------|-------------|------|
| Length over all | 179.96 | m |
| Breadth moulded | 30 | m |
| Depth moulded | 14.05 | m |
| Summer draft | 9.822 | m |
| Summer dwt | 34,914 | MT |
| TPC (summer) | 48.1 | t/cm |
| GT/NT | 21502/11191 | T |
| Lightweight | 7783 | T |
| Suez | 21408/19931 | T |
| Panama | 17931 | T |

| | | |
|----------------------|-------|----------------|
| W/L-H/c Summer | 5.70 | m |
| W/L-H/c Ballast mid. | 10.15 | m |
| Keel – Top H/c | 15.75 | m |
| Keel – Top of mast | 40.90 | m |
| VLSFO cap. (85%) | 937 | m ³ |
| ULSGO cap. (85%) | 336 | m ³ |
| FW capacity (100%) | 212 | m ³ |
| Ballast cap. (100%) | 14661 | m ³ |
| Slop tanks (CH wash) | 198 | m ³ |

Operational restrictions

No mixing of new bunkers with bunkers already onboard.
Vessel is only allowed to work single hook on a single hatch
Constants could be affected due to vessel retaining onboard of hold cleaning water and/or grey water as per MARPOL regulations.

Bunker tank capacities could be affected due to vessel having to keep different IFO and ULSGO grades separated as a consequence of compliance with Marpol regulations a/o EU directives a/o USA a/o any other national regulations including latest amendments.

This vessel is member of an independent fuel testing system (Intertek Lintec). Charterers or their representatives are always at liberty to witness the sampling during any bunkering of the vessel under the charter and any discrepancies found between supplier's sample and Intertek Lintec sample then the Intertek Lintec sample to be final and binding. As long as the analysis results of the fuel oil onboard has not been received and approved by Owners, the vessel may have to use ULSGO instead

Cargospaces

| Cap. (ft³) | Grain | Bale |
|------------|---------|---------|
| C/H #1 | 215919 | 213641 |
| C/H #2 | 345747 | 335253 |
| C/H #3 | 345747 | 335372 |
| C/H #4 | 345747 | 335372 |
| C/H #5 | 304738 | 295762 |
| Total | 1557898 | 1515400 |

| Floor space | LxB/Ba/H(m) | Hatch Size |
|-------------|-------------------|-------------|
| C/H #1 | 26.42x7.28/25.96 | 14.05x14.20 |
| C/H #2 | 27.86x25.96 | 20.40x20.40 |
| C/H #3 | 27.86x25.96 | 20.40x20.40 |
| C/H #4 | 27.86x25.96 | 20.40x20.40 |
| C/H #5 | 26.17x10.20/25.96 | 20.40x20.40 |

| drft(m) | Deadweight (t) |
|---------|----------------|
| 9.82 | Summer 34914 |
| 10.03 | Trop. 35897 |
| 10.25 | Trop.F. 35876 |
| 10.04 | Fresh 34913 |
| 9.62 | Winter 33935 |

| Ventilation | Nat. |
|---------------|--------|
| Airchanges | - |
| CO2 fitted | Fitted |
| A60 bkhd | Fitted |
| Smoke det. | Fitted |
| Aussie fitted | Fitted |
| Dehumidifier | N/A |

*Note: In case of heavy cargoes to be loaded, the maximum quantity is to be in accordance with vessel's loading and stability booklets.

Strength

| | CH#1 | CH#2 | CH#3 | CH#4 | CH#5 | | |
|-------------|---|-------|-------|-------|-------|------------------|-----------------------|
| Hatchcovers | 2.5 | 2.8 | 3.2 | 3.2 | 3.2 | t/m ² | *observe load manual |
| Weatherdeck | 4.0 | 4.0 | 4.1 | 4.1 | 4.1 | t/m ² | *Except betw. hatches |
| Tanktop | 20 | 20 | 20 | 20 | 20 | t/m ² | *Local strength |
| Tanktop | 20.47 | 11.81 | 20.50 | 11.81 | 16.67 | t/m ² | *Uniform distributed |
| Steel coils | Standard coil loading condition – 2 tiers x 15 T coils (dim. W1.5m x L1.5m), 3 dunnages | | | | | | |

*Note 1: Alternate hold loading condition (Nos. 2 & 4 may be empty)
*Note 2: Other coil loading conditions subject to owners approval of local stress calculations

Deck equipment

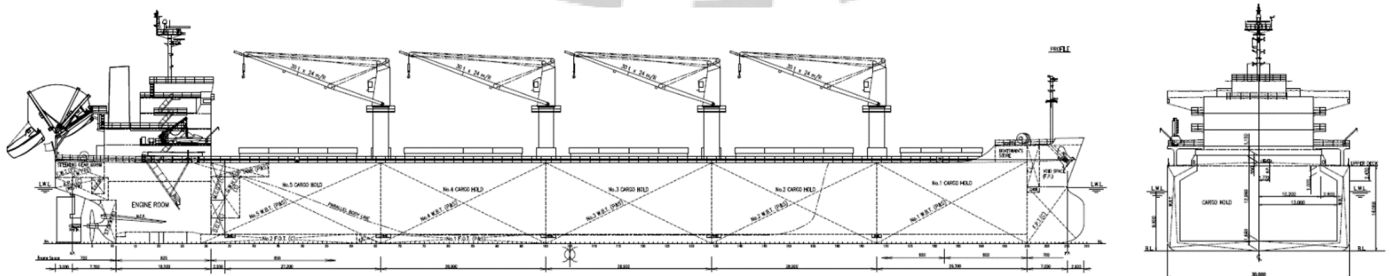
| | |
|-----------------|------------------------------|
| Hatch type | Hydr. End-folding type, DS |
| Maker | MacGregor |
| Cargo gear type | Electro hydr. 30t x 4 cranes |
| Maker | IHI |
| Outreach | 9.00 mtr |
| Grab handling | 24 max. grab(bucket)+cargo |
| Grabs fitted | 3 X 10 M³ remote controlled |
| De-ballast Cap. | Max. 1100 M³ / H |

Features

| | |
|-----------------------------|-----|
| ITF fitted | Yes |
| Log fitted | No |
| WBTS fitted (AMS approved) | Yes |
| Lakes fitted | No |
| Suitable for grab discharge | Yes |

Machinery details

| | |
|----------------------|---------------------------|
| Main engine | MAN B&W 6S46ME-B8.3 |
| NCO | 4860 KW @ 104.2 rpm |
| Aux. engines | Yanmar 6 EY18ALW – 3 sets |
| Electrical | 575KVA/ 450V/ 60 Hz |
| Freshwater generator | Max. 15t/day |



All details "about" given in good faith, without guarantee.