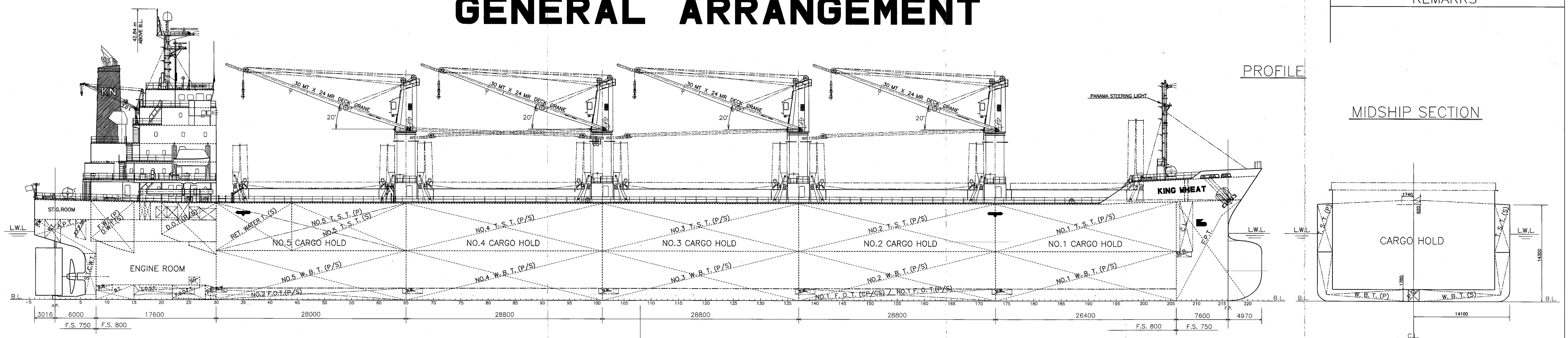


GENERAL ARRANGEMENT

REMARKS



PROFILE

MIDSHIP SECTION

A DECK

B DECK

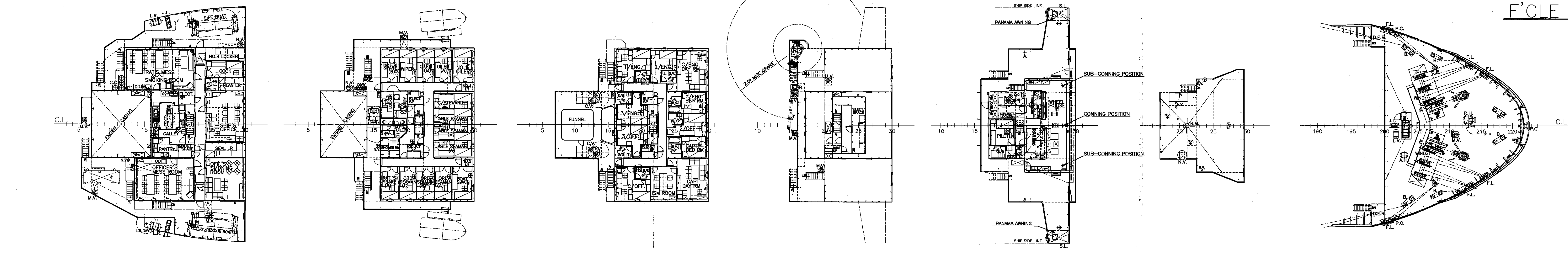
C DECK

D DECK

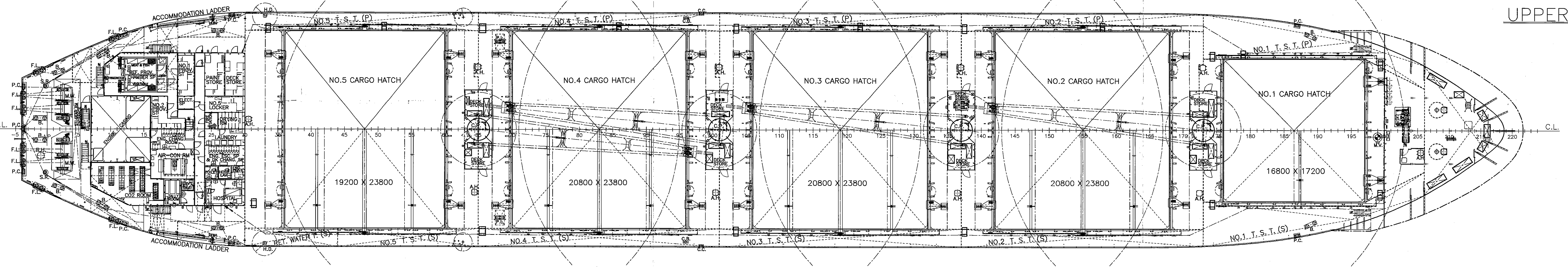
NAV.BRI. DECK

COMPASS DECK

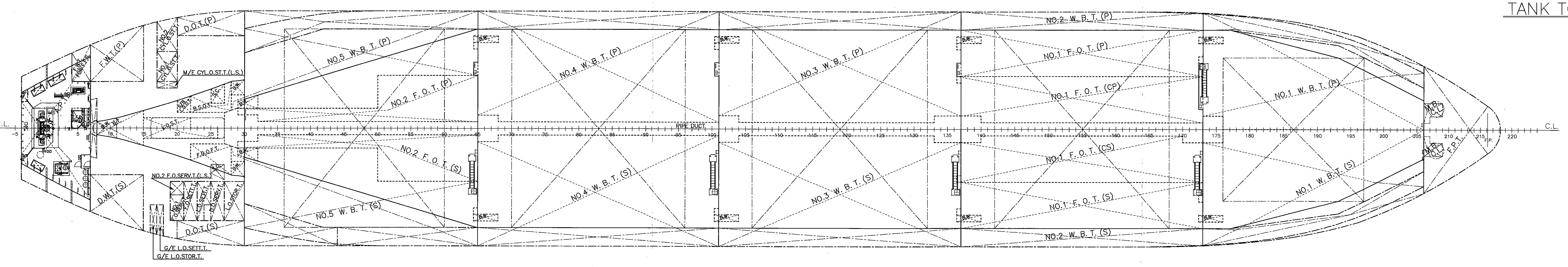
F'CLE DECK



UPPER DECK



TANK TOP



PRINCIPAL PARTICULARS

LENGTH (O.A.)	179.99 M
LENGTH (P.P.)	172.00 M
BREADTH (MLD)	28.20 M
DEPTH (MLD)	14.30 M
DRAFT (SUMMER)(EXT.)	10.031 M
DEADWEIGHT	33387 t
GROSS TONNAGE	21192
MAIN ENGINE	6UEC52LA x 1 SET
M.C.O.	6250 kW x 118 min ⁻¹
SERVICE SPEED	about 14.3 KNOTS
CLASSIFICATION	NK NS* (Bulk Carrier-modified) MNS*
Descriptive Note : Double hull construction applied to all cargo holds	

This document (drawing) is the PROPERTY of SHIN KURUSHIMA DOCKYARD CO., Ltd. and is confidential. In this connection, please study observe the following: It shall not be treated, nor copied, nor used for any other purpose, nor communicated to any other person without our written permission. 本図書(設計図書)は、株式会社神戶造船所(株)の財産であり、秘密保持事項として扱われます。本図書(設計図書)の複製、転載、改訂、貸与、譲渡、開示、漏洩、毀損、滅失、その他の権利侵害行為は、法的責任を負うものとします。 株式会社 神戶造船所



SNO.7227
GENERAL ARRANGEMENT
— FINISHED PLAN — LIST NO. C-3

IMO NO.	9392092
GENERAL MANAGER	T. Miyahara
ASST. MANAGER	T. Murakami
MANAGER	T. Murakami
ASST. MANAGER	T. Kawakami
STAFF	K. Okubo
DRAWN	T. Tachibana
DATE	2009/5/25
SCALE	1/200
DWG. NO.	C02-002-00

