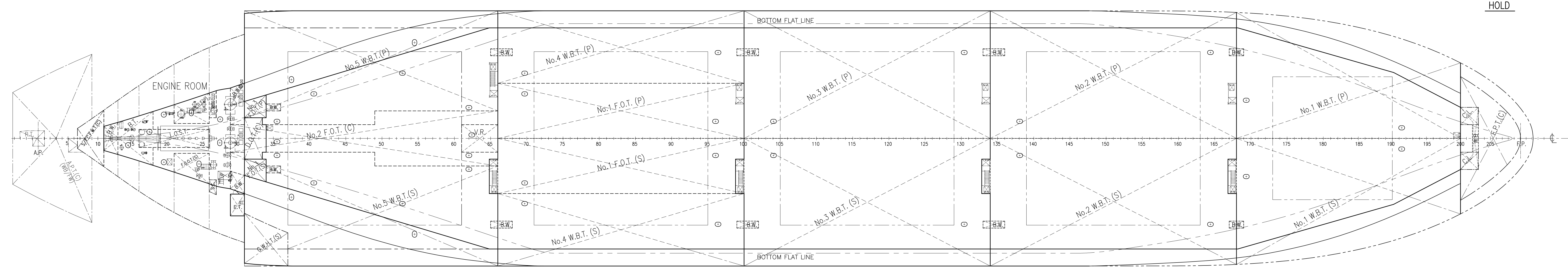
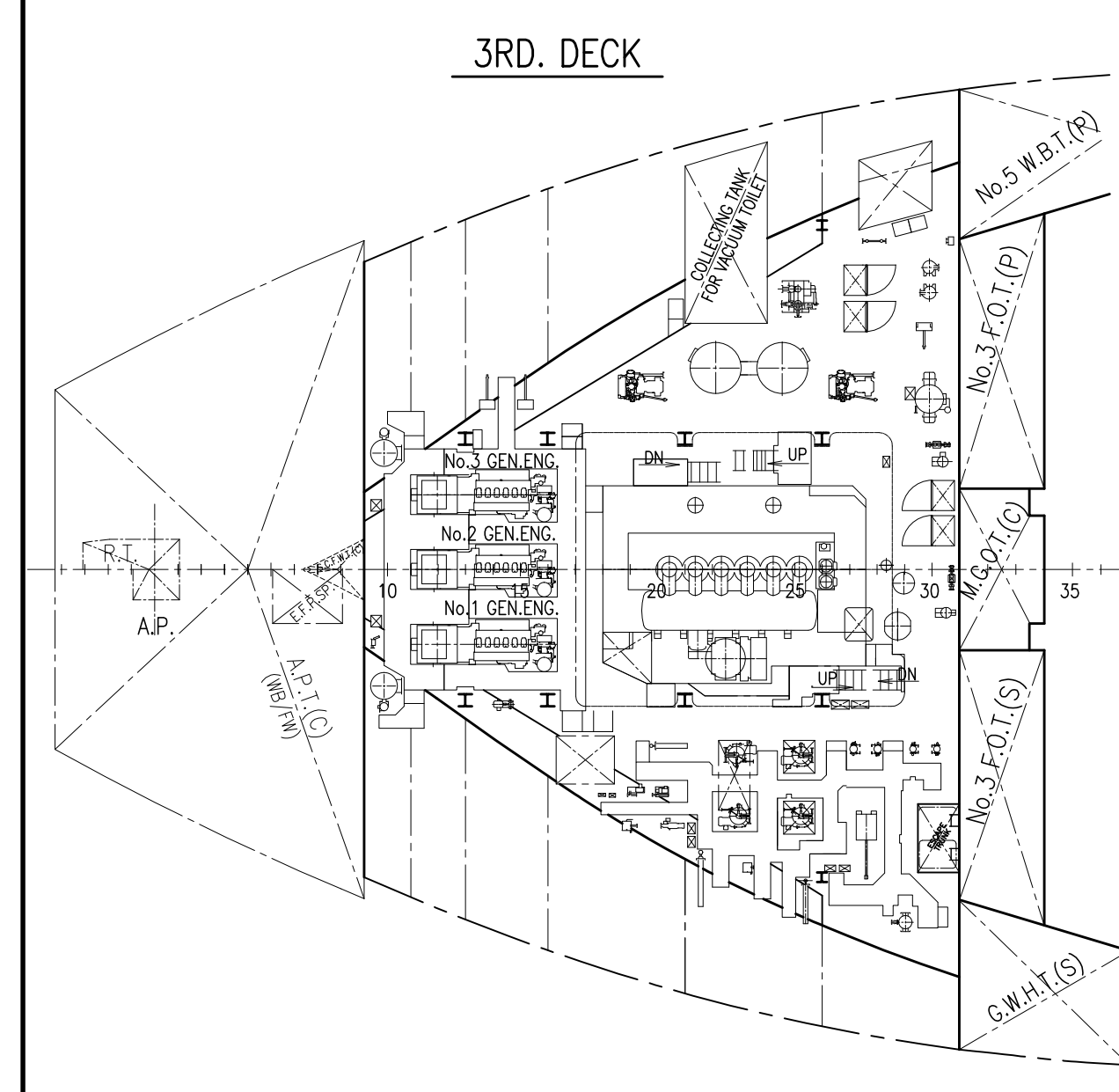
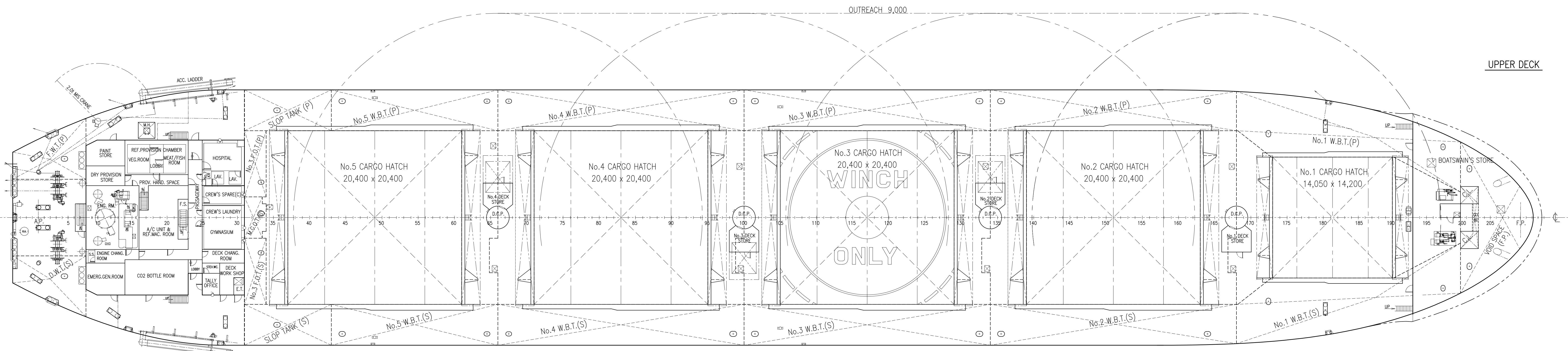
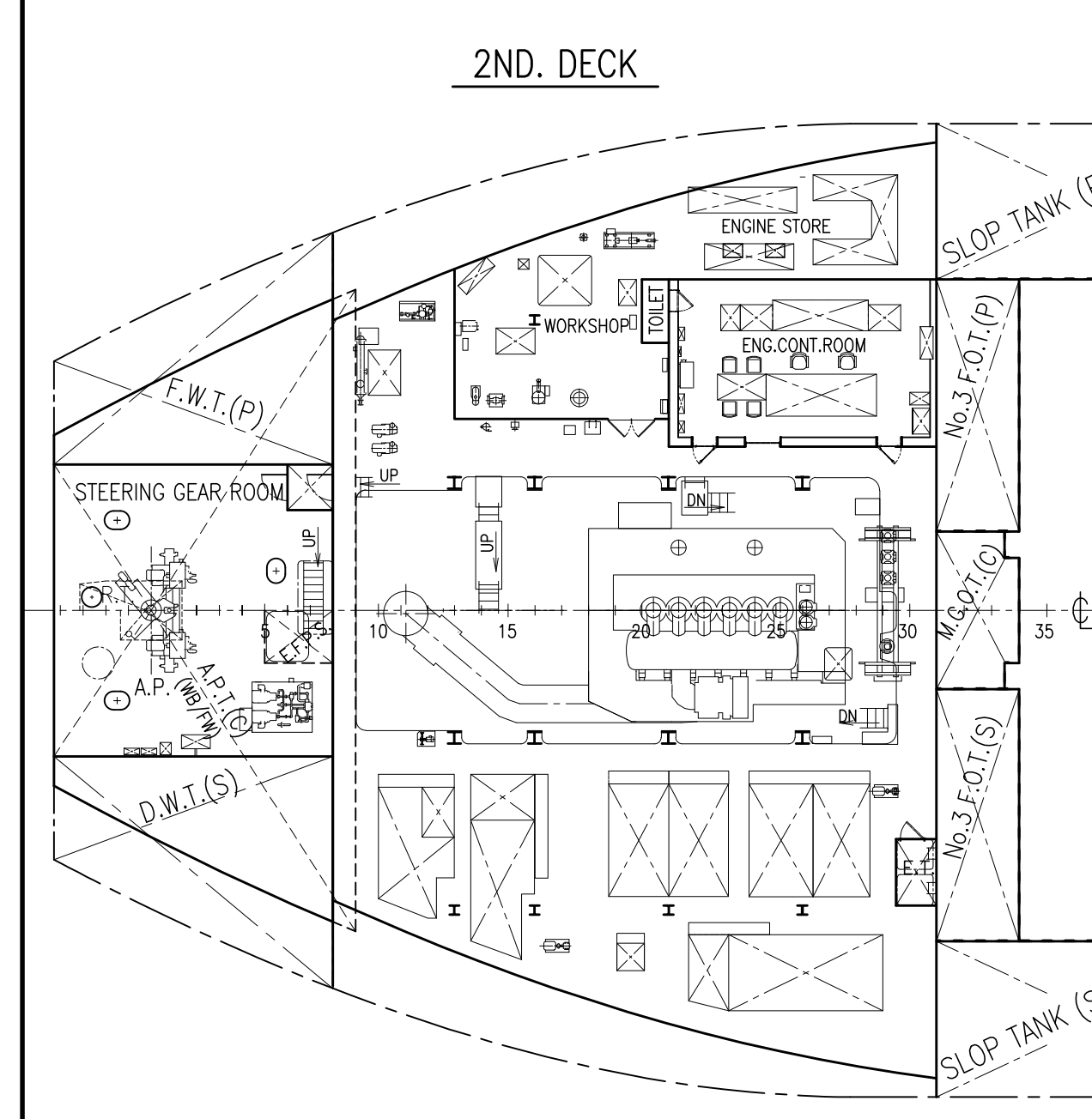
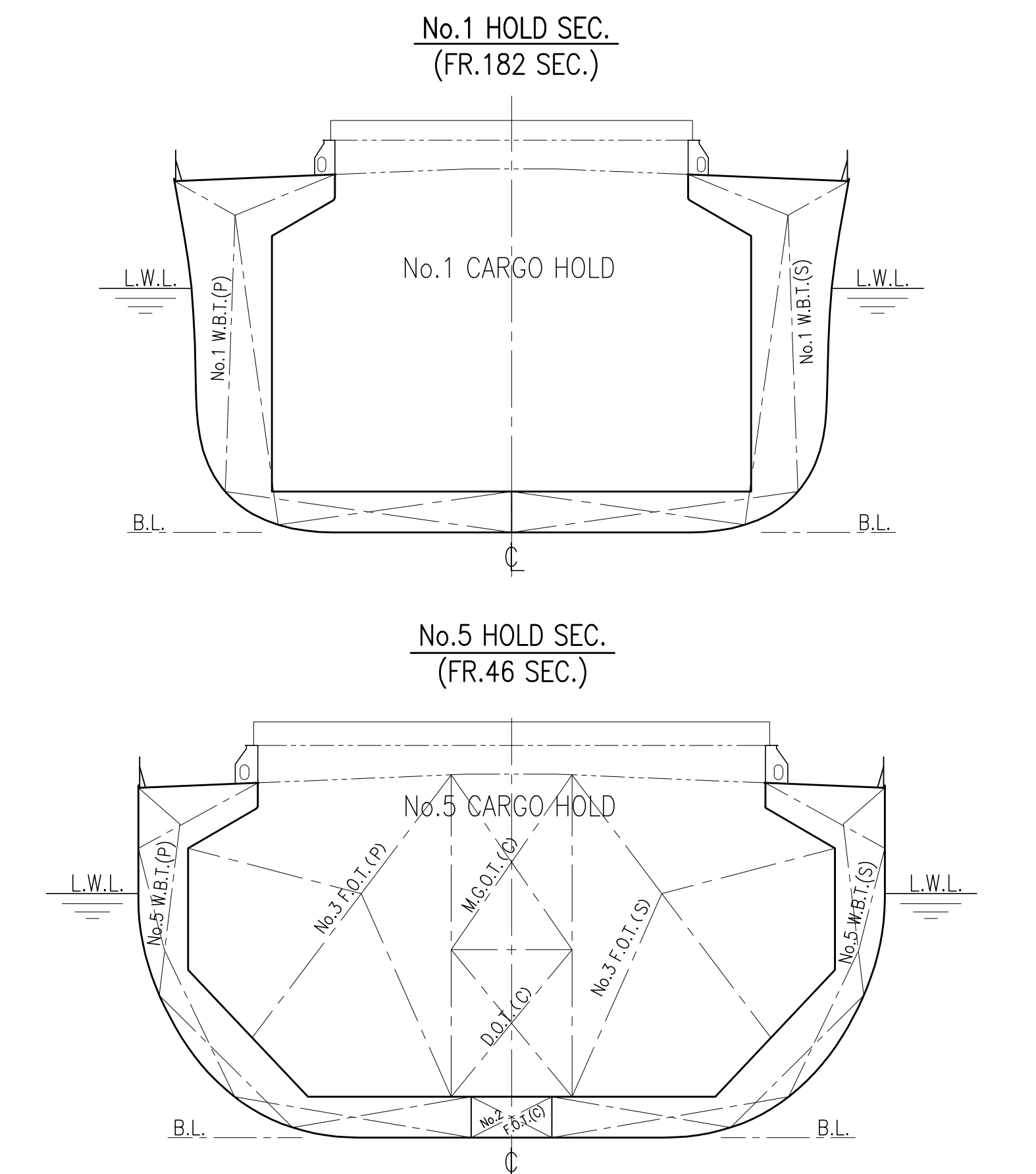
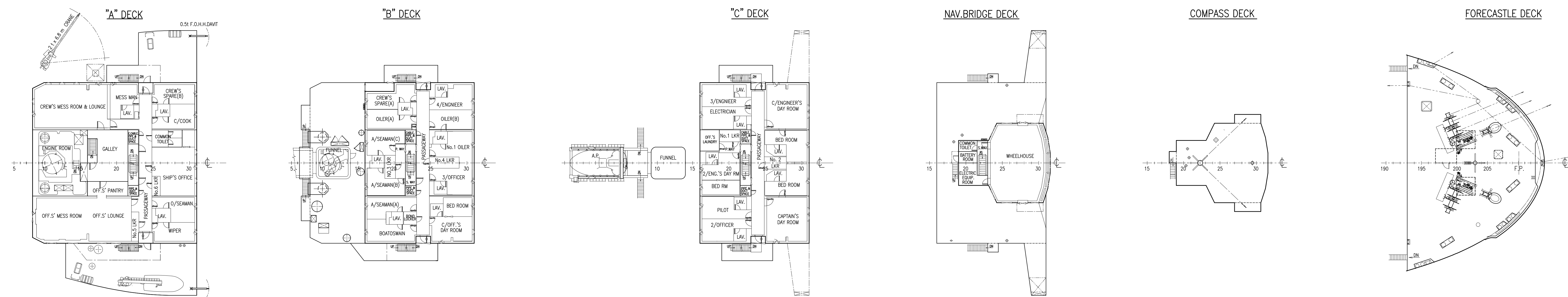
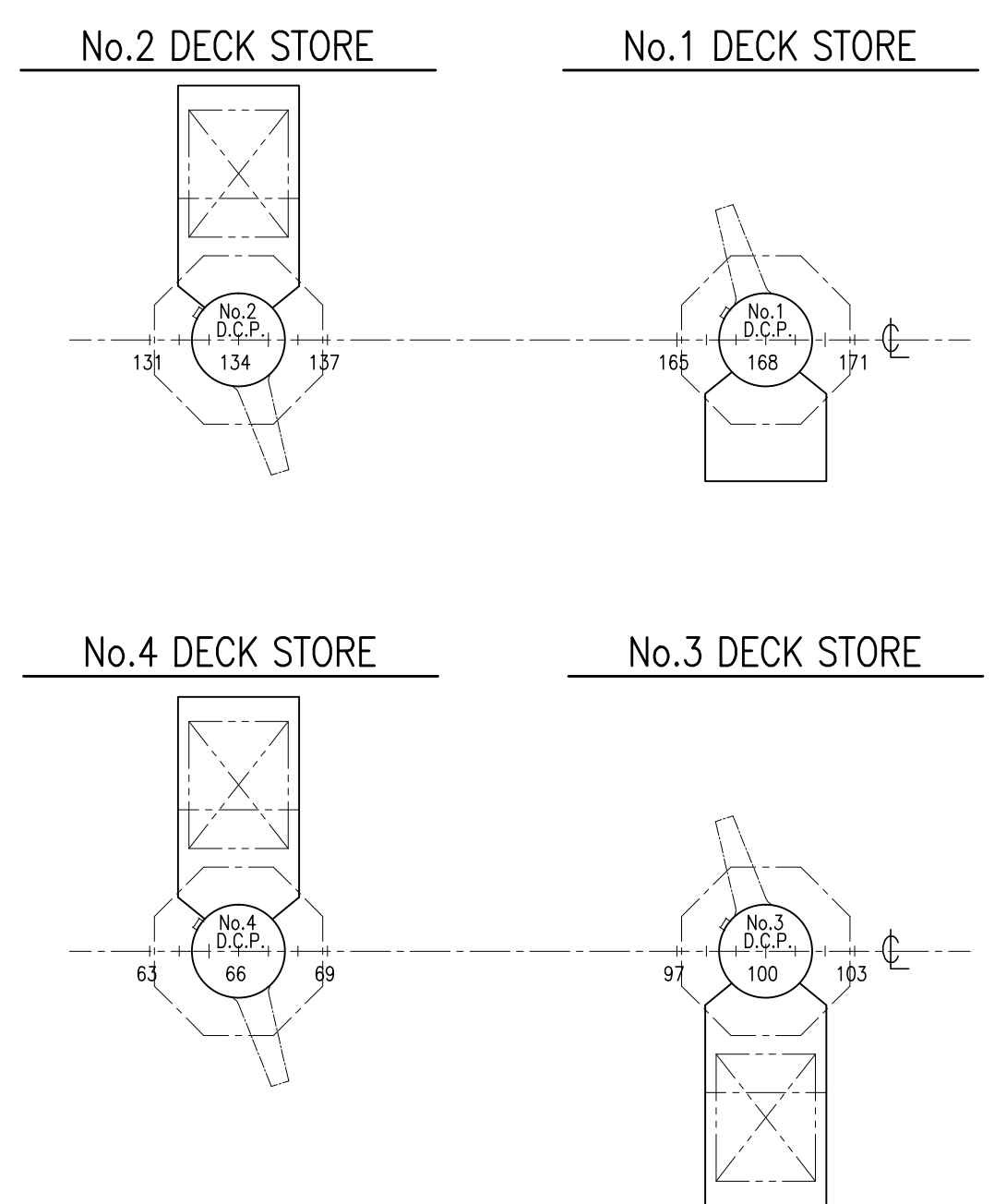
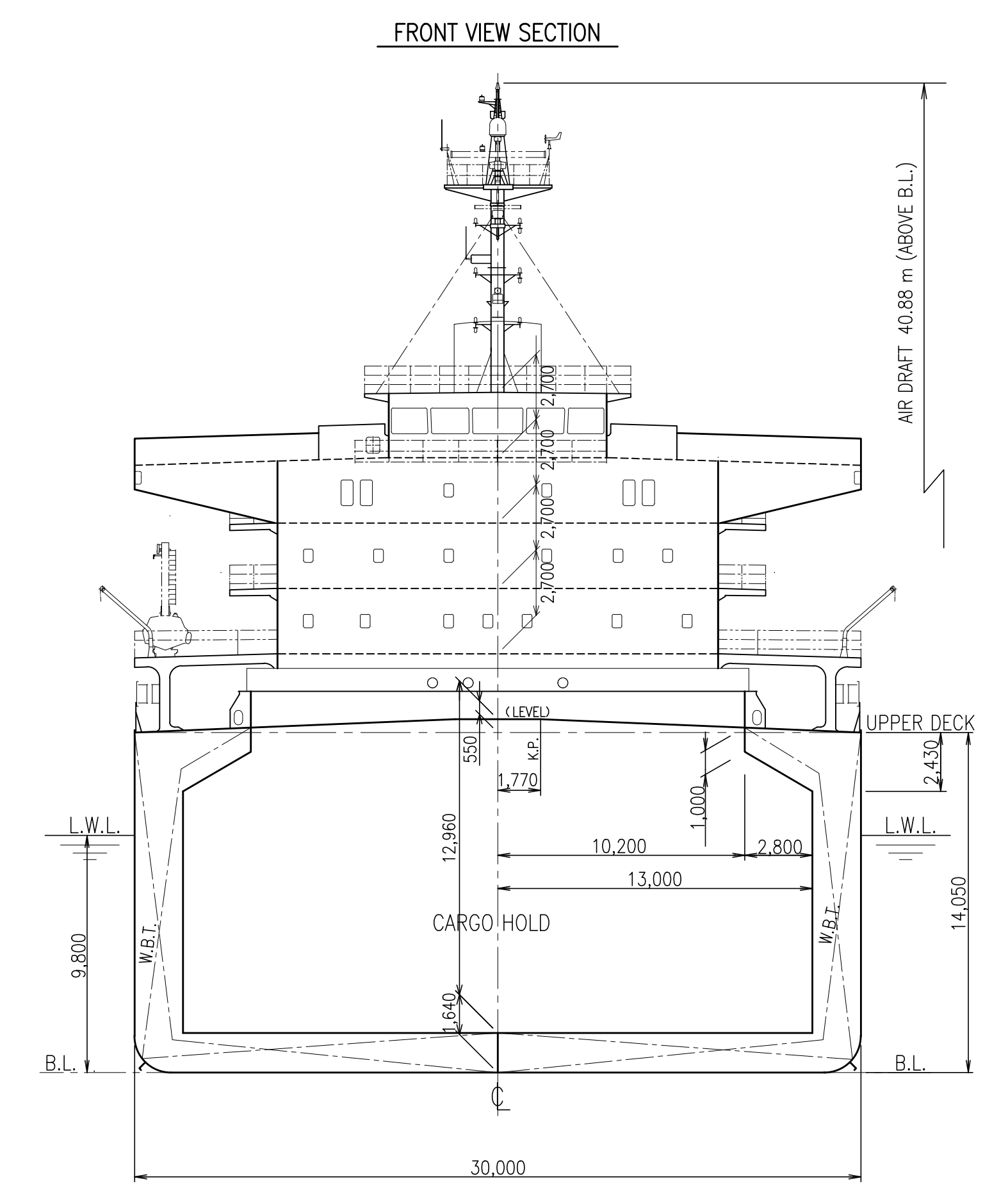
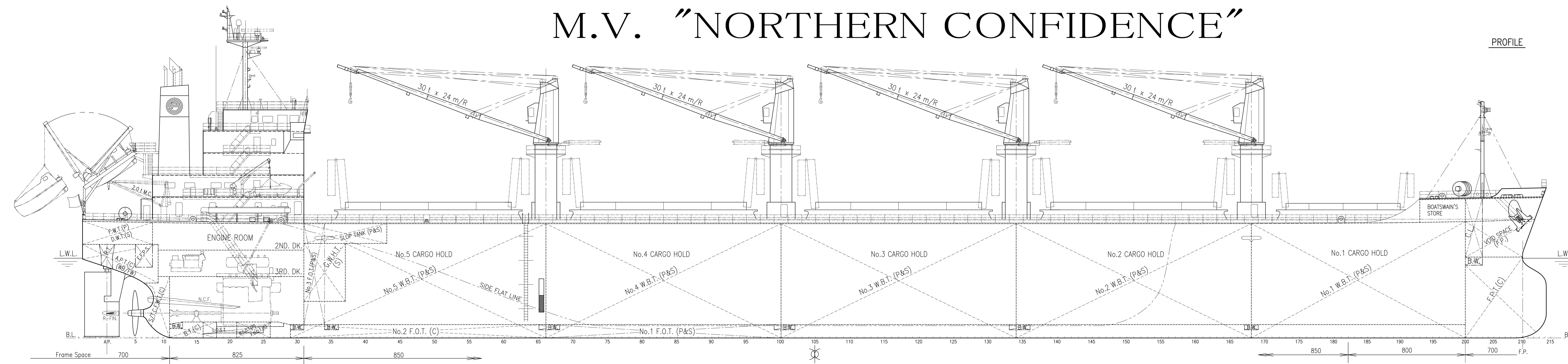


# GENERAL ARRANGEMENT M.V. "NORTHERN CONFIDENCE"

BIBLIOGRAPHY  
 1) DESIGNED BY HAKODATE SHIPYARD  
 FOR S.No.875.  
 (July 5, 2016)



PRINCIPAL PARTICULARS

|                             |  |
|-----------------------------|--|
| LENGTH (O.A.)               | 179.97 m   |
| LENGTH (P.P.)               | 174.00 m   |
| BREADTH (MLD.)              | 30.00 m  |
| DEPTH (MLD.)                | 14.05 m  |
| SUMMER DRAFT (EXT.)         | 9.822 m  |
| DEADWEIGHT (AT SUMMER)      |  |
| INTERNATIONAL GROSS TONNAGE | 21,502 t   |
| INTERNATIONAL NET TONNAGE   | 11,191 t   |
| MAIN ENGINE                 | MAN B&W 6S46ME-B8.3 x 1 set  |
| M.C.O.                      | 5,720 kW (7,777 PS) AT 110.0 rpm   |
| N.C.O. (85% M.C.O.)         | 4,860 kW (6,607 PS) AT 104.2 rpm   |
| SERVICE SPEED               | 14.0 kts   |
| COMPLEMENTS                 | 24 P.  |
| CLASSIFICATIONS             | NK, NS*, (BCM, BC-XII, SHC 2&4E, GRAB, PSPC-WBT)<br>(WS), (BWS), (EED-p0), (HM), MINS* (MO)<br>Double hull construction applied to all cargo holds |
| IMO NUMBER                  | 9713210  |

DESIGN TANK TOP LOAD, HATCH COVER LOAD, DESIGN DECK LOAD

| HOLD NO.  | TANK TOP LOAD           | HATCH COVER LOAD       | POSITION            | UPP.&CROSS DECK LOAD   |
|-----------|-------------------------|------------------------|---------------------|------------------------|
| No.1 C.H. | 200.8 kN/m <sup>2</sup> | 46.7 kN/m <sup>2</sup> | FR.176 α ~ FR.193   | 81.4 kN/m <sup>2</sup> |
| No.2 C.H. | 115.9 kN/m <sup>2</sup> | 35.9 kN/m <sup>2</sup> | FR.145 α ~ FR.176 α | 82.6 kN/m <sup>2</sup> |
| No.3 C.H. | 201.1 kN/m <sup>2</sup> | 34.3 kN/m <sup>2</sup> | FR.43 α ~ FR.145 α  | 37.9 kN/m <sup>2</sup> |
| No.4 C.H. | 115.9 kN/m <sup>2</sup> | 34.3 kN/m <sup>2</sup> | A.E. ~ FR.43 α      | 63.2 kN/m <sup>2</sup> |
| No.5 C.H. | 163.5 kN/m <sup>2</sup> | 34.3 kN/m <sup>2</sup> | -                   | -                      |

CAUTION : Any cargo cannot be loaded on the deck & hatch covers.

THE HAKODATE DOCK CO., LTD.  
 HAKODATE SHIPYARD HAKODATE, JAPAN

NORTHERN CONFIDENCE  
 S.No.875

GENERAL ARRANGEMENT

FINISHED PLAN

SCALE 1/200

THE HAKODATE DOCK CO., LTD.  
 HAKODATE SHIPYARD  
 HAKODATE JAPAN

SHIP DESIGN DEPARTMENT  
 BASIC DESIGN SECTION

APPROVED *[Signature]*  
 CHECKED *[Signature]*  
 CHECKED *[Signature]*  
 DRAWN *[Signature]*

DATE July 5, 2016

SECTION NO. S.No.875 DRAWING NO. G-2/F-D  
 LIST NO. P-3