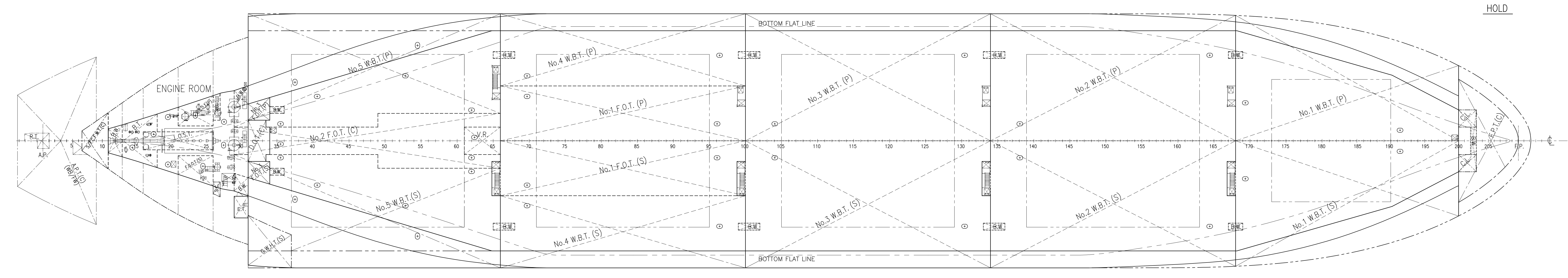
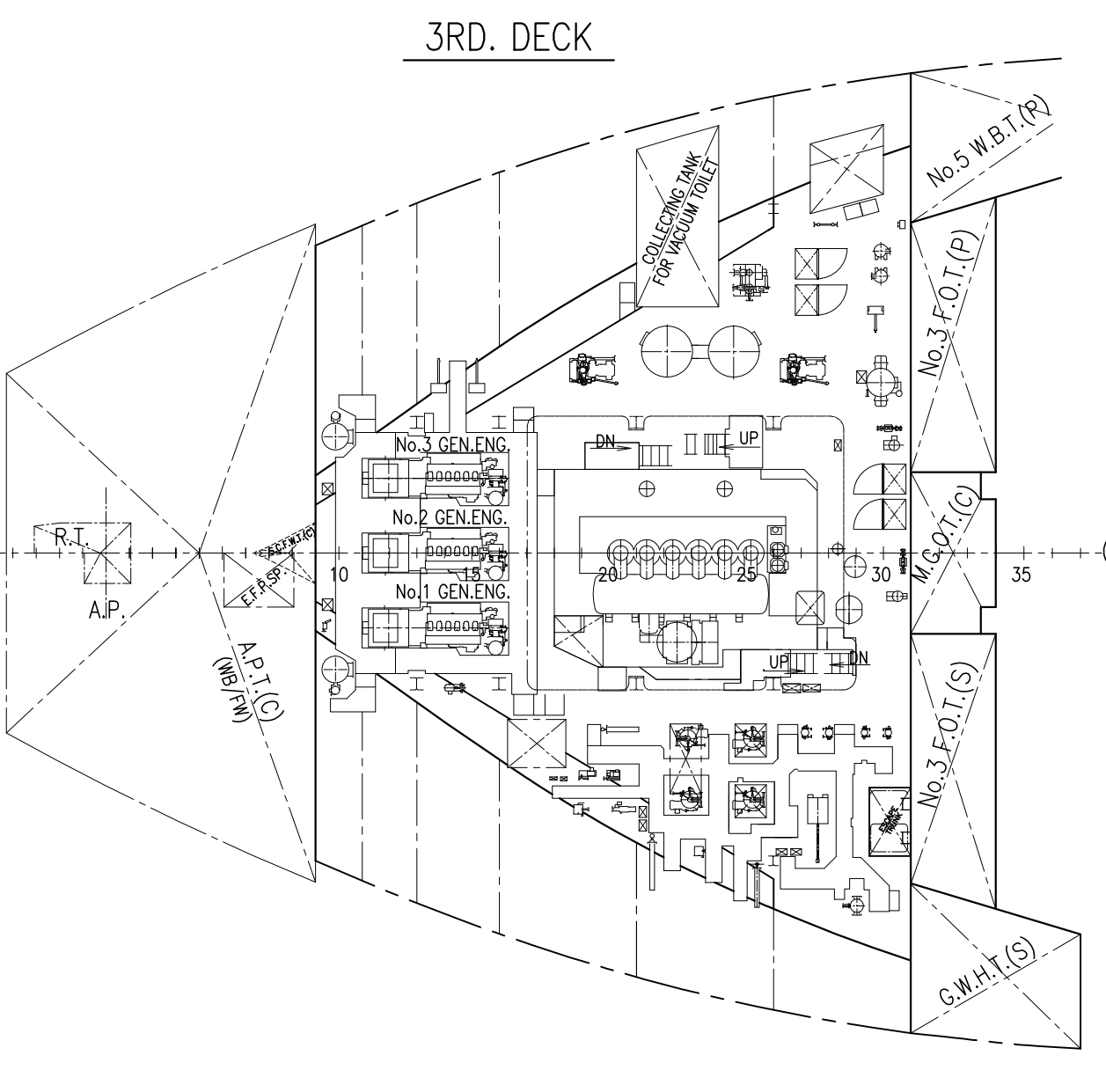
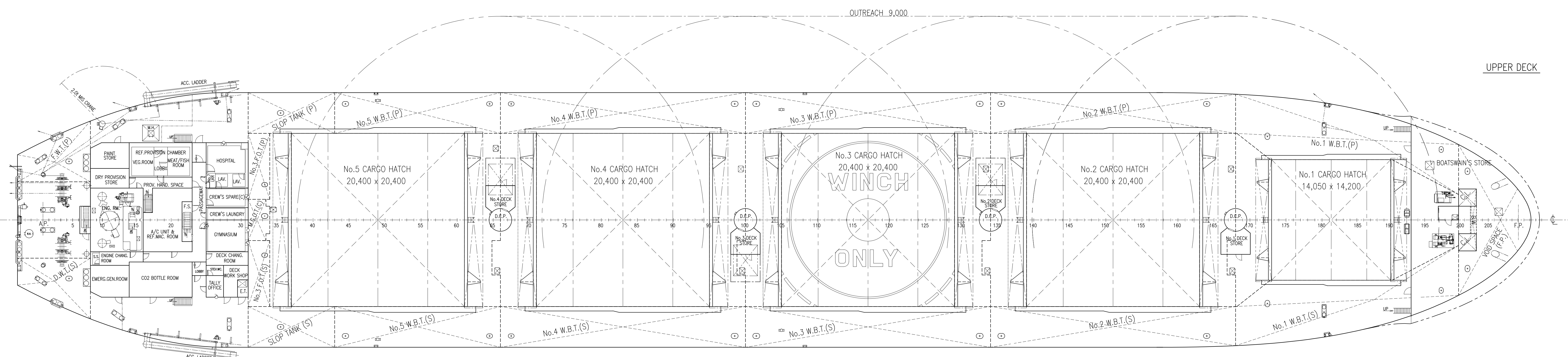
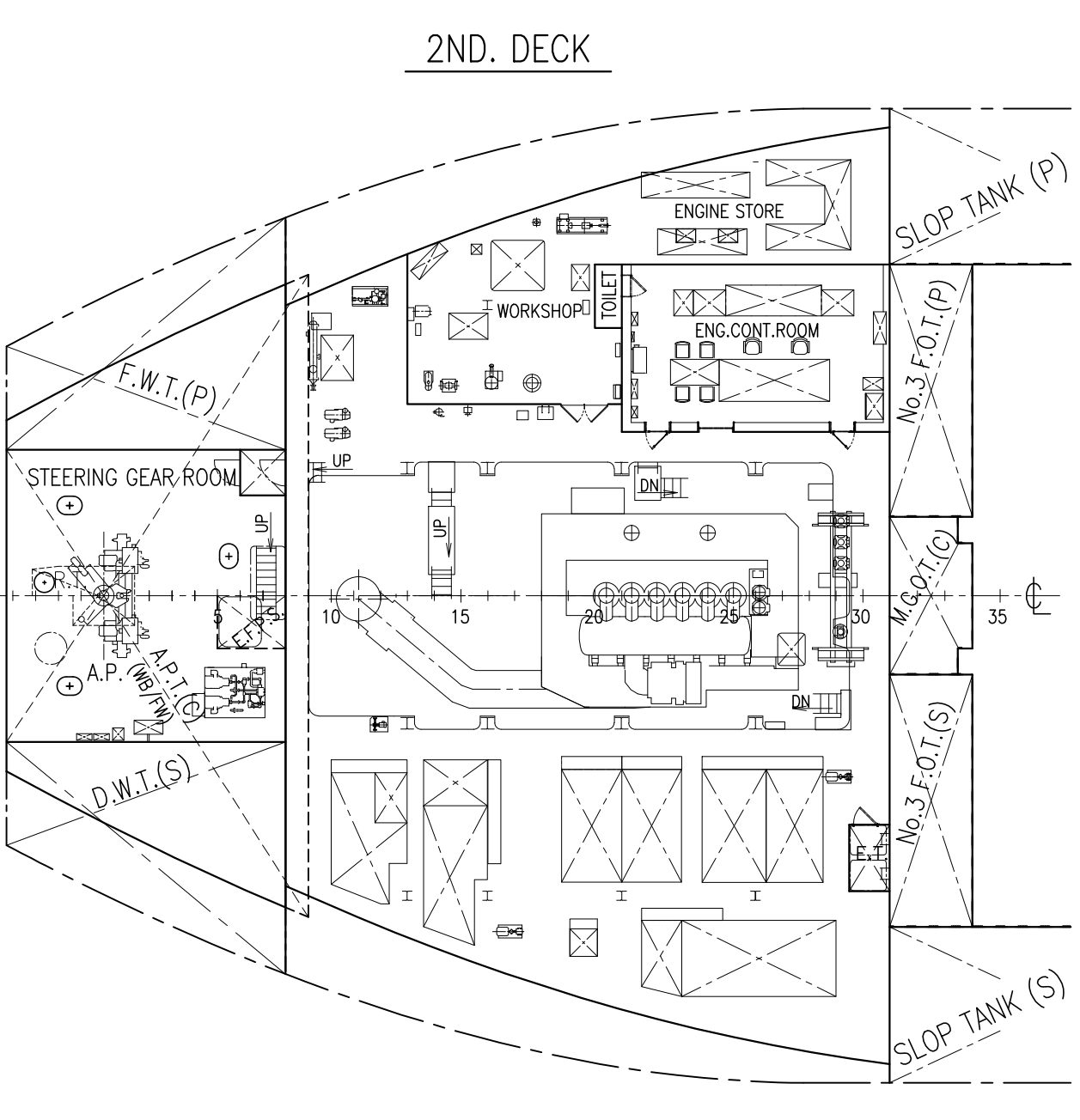
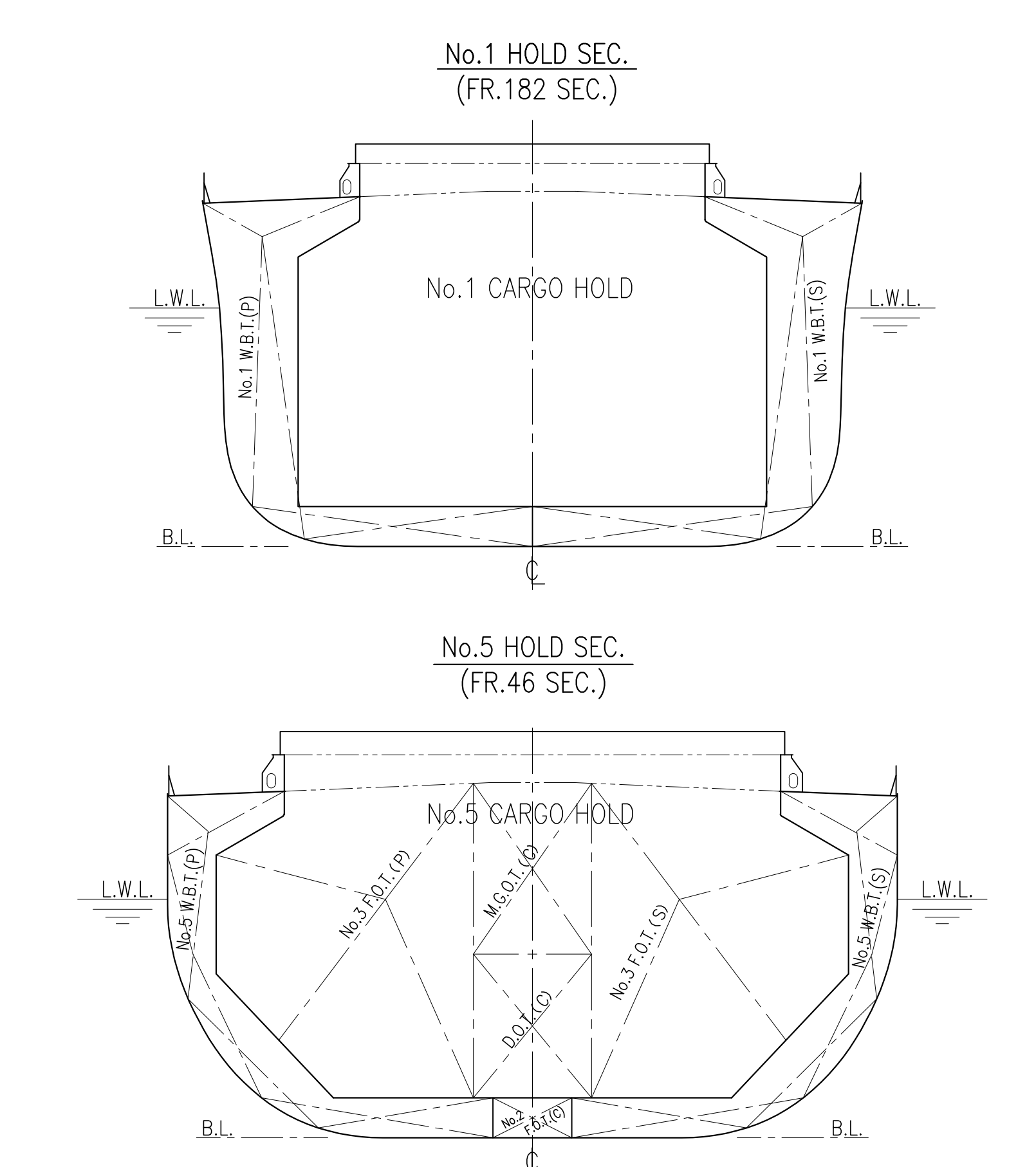
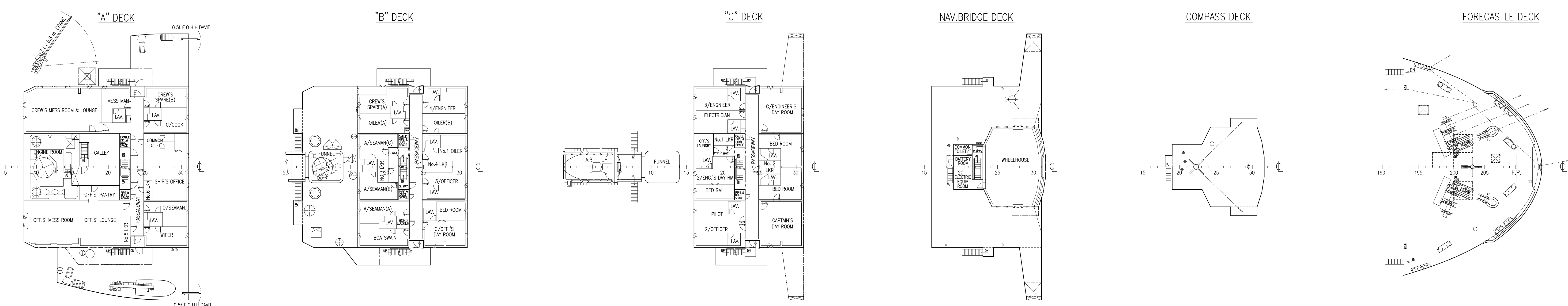
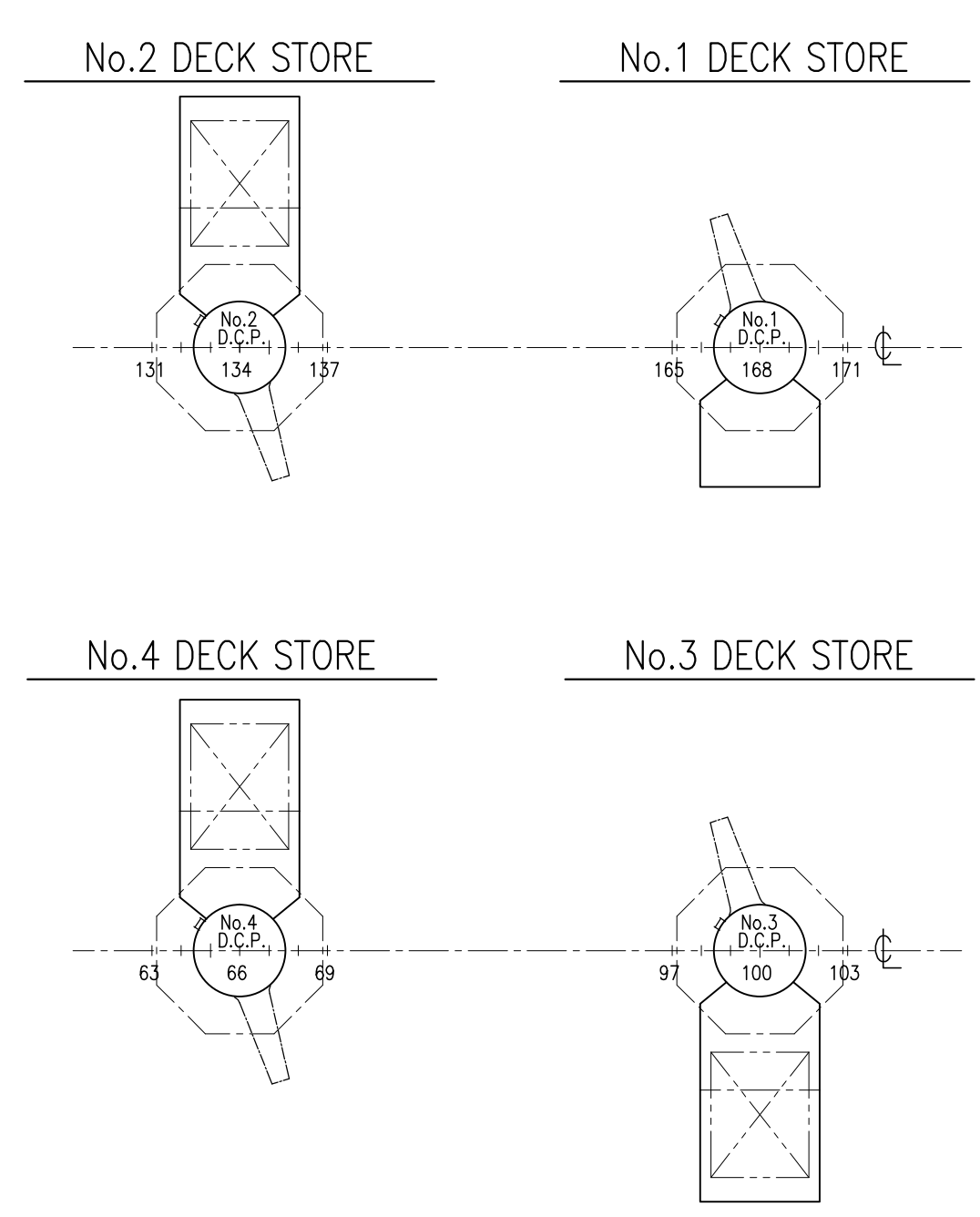
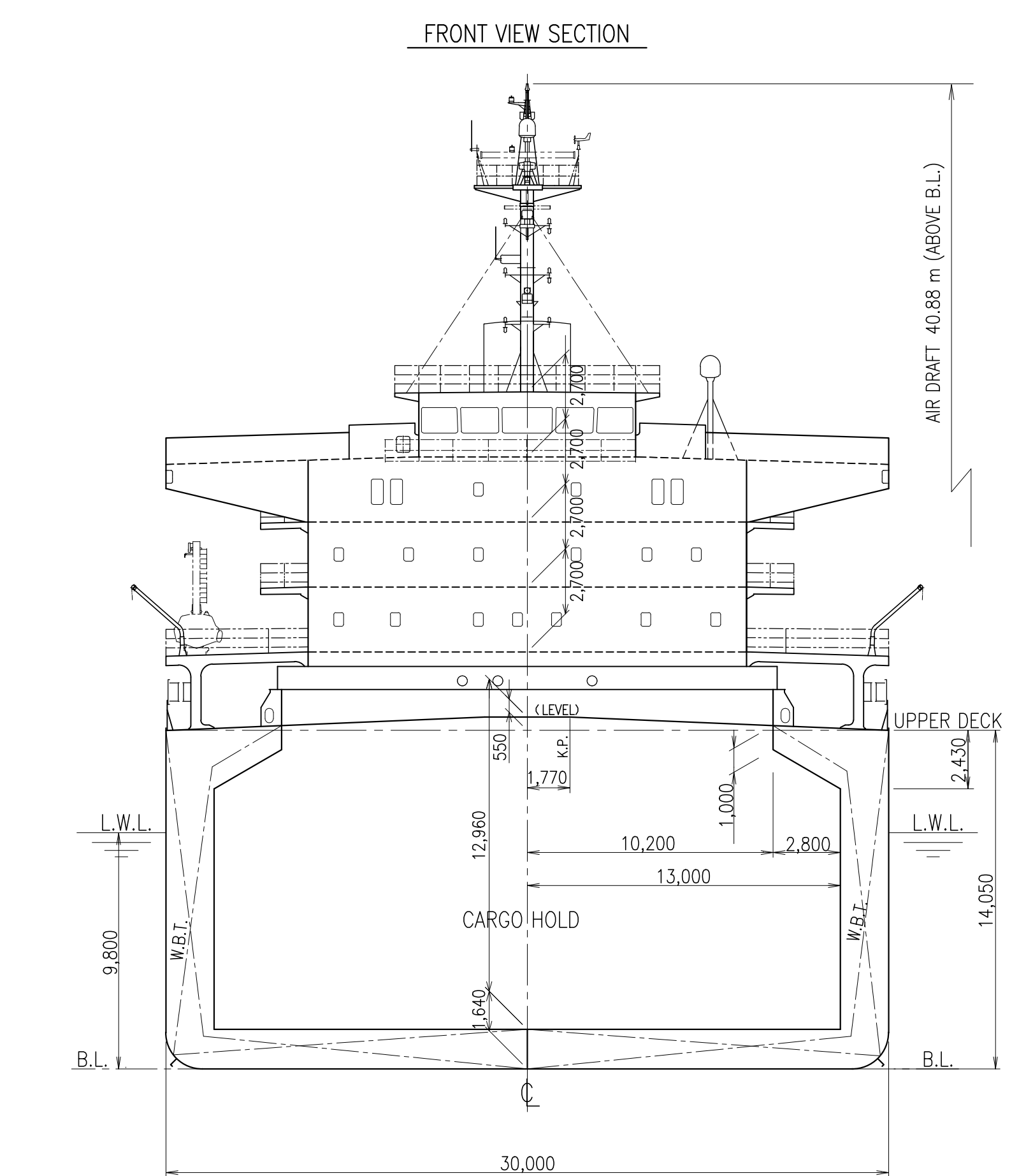
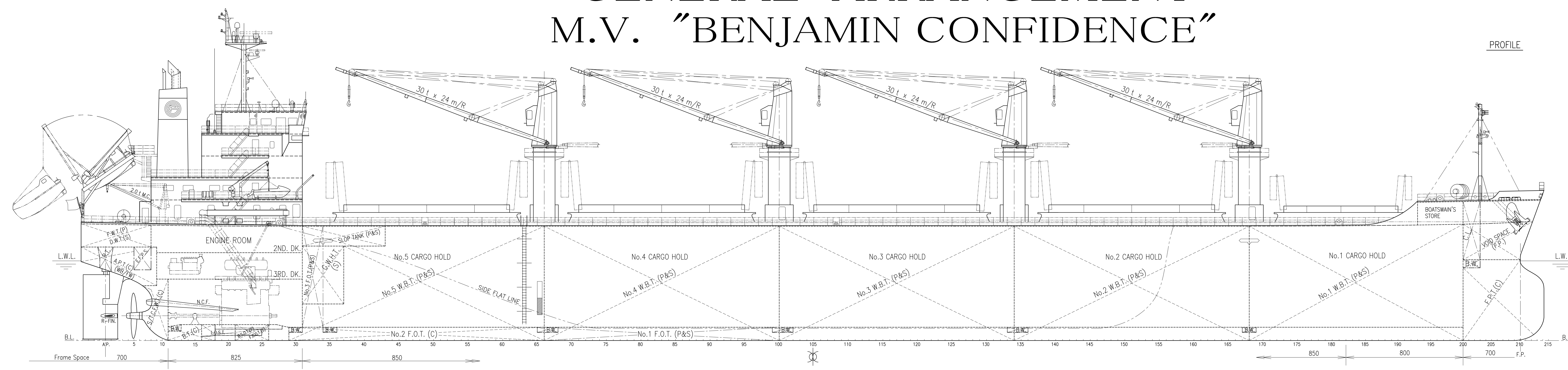


GENERAL ARRANGEMENT M.V. "BENJAMIN CONFIDENCE"

BIBLIOGRAPHY

DESIGNED BY HAKODATE SHIPYARD
FOR S.No.877.
(Oct. 26, 2016)



PRINCIPAL PARTICULARS

LENGTH (O.A.)	179.97 m
LENGTH (P.P.)	174.00 m
BREADTH (M.L.D.)	30.00 m
DEPTH (M.L.D.)	14.05 m
SUMMER DRAFT (EXT.)	9.822 m
DEADWEIGHT (AT SUMMER)	34,898 t
INTERNATIONAL GROSS TONNAGE	21,502 t
INTERNATIONAL NET TONNAGE	11,191 t
MAIN ENGINE	MAN B&W 6S46ME-BB.3 x 1 set
M.C.O.	5,720 kW (7,777 PS) AT 110.0 rpm
N.C.O. (85% M.C.O.)	4,860 kW (6,607 PS) AT 104.2 rpm
SERVICE SPEED	14.0 kts
COMPLEMENTS	24 P
CLASSIFICATIONS	NK, NS*, (BCM, BC-XII, SHC 2&4E, GRAB, PSPC-WBT) (WS), (BWTIS), (EEDI-p0), (IHM), MNS* (MO)
	Double hull construction applied to all cargo holds.
IMO NUMBER	9713234

DESIGN TANK TOP LOAD, HATCH COVER LOAD, DESIGN DECK LOAD

HOLD NO.	TANK TOP LOAD	HATCH COVER LOAD	POSITION	UPP.&CROSS DECK LOAD
NO.1 C.H.	200.8 kN/m ²	46.7 kN/m ²	FR.176 α ~ FR.193	81.4 kN/m ²
NO.2 C.H.	115.9 kN/m ²	35.9 kN/m ²	FR.145 α ~ FR.176 α	81.4 kN/m ²
NO.3 C.H.	201.1 kN/m ²	34.3 kN/m ²	FR.43 α ~ FR.145 α	37.9 kN/m ²
NO.4 C.H.	115.9 kN/m ²	34.3 kN/m ²	A.E. ~ FR.43 α	63.2 kN/m ²
NO.5 C.H.	163.5 kN/m ²	34.3 kN/m ²		-

CAUTION : Any cargo cannot be loaded on the deck & hatch covers.

THE HAKODATE DOCK CO., LTD.
HAKODATE SHIPYARD HAKODATE, JAPAN

BENJAMIN CONFIDENCE
S.No.877

GENERAL ARRANGEMENT

FINISHED PLAN

SCALE 1/200

THE HAKODATE DOCK CO., LTD.
HAKODATE SHIPYARD
HAKODATE JAPAN

SHIP DESIGN DEPARTMENT
BASIC DESIGN SECTION

APPROVED
CHECKED
CHECKED
DRAWN

DATE Oct. 26, 2016

SECTION NO. S.No.877 DRAWING NO. G-2/F-0

LIST No. P-3