

MV: NANJING CONFIDENCE

General

Class	NKK
Class notation	CSR BC-A BC-XII, GRAB[20]
Ship type	DHBC
Year built	JAN 2017
Yard	Nanjing Dongze
DD due	JAN 2022
SS due	JAN 2022

Flag	Philippines
Registry	Manila
Reg. nr.	MNLA000835
Call Sign	DUIO
IMO nr.	9769697
Telex	454894710
Phone	+870 7738 01894
Email	nanjingconfidence@amosconnect.com

Speed & Consumption

Laden	abt. 13 kts on abt. 19.5 IFO + abt. 0.1 mt LSMGO
Eco (WOG)	abt. 12 kts on abt. 17.5 IFO + abt. 0.1 mt LSMGO
Port Idle	abt. 2.0 mt IFO + abt. 0.1 mt LSMGO
Port WWW	abt. 4.5 mt IFO + abt. 0.1 mt LSMGO

Vessel consumes LSMGO when manoeuvring and sailing in narrow waterways and canals. Speed / Cons. upto Windforce BF 4 / Douglas sea state 3, basis no adverse current and on even-keel condition.
Bunker specs: IFO ISO 8217:2017 (E) RMG 380 / LSMGO: ISO 8217:2017 (E) DMA (max 0.1% Sulphur)
Sulphur specs and each delivery and burning of specific types (grades) of bunkers always to comply with MARPOL regulations a/o EU directives a/o USA a/o any other national regulations including latest amendments.

Principal dimensions

Length over all	179.95	m
Breadth moulded	32.00	m
Depth moulded	15.00	m
Summer draft	10.519	m
Summer dwt	38,917	MT
TPC (summer)	54.4	t/cm
GT/NT	25606/13035	T
Lightweight	9944.7	T
Suez (nett)	23646.08	T
Panama PC/UMS	21298	T

W/L-H/c Summer	6.38	m
W/L-H/c Ballast mid.	10.68	m
Keel – Top H/c	16.90	m
Keel – Top of mast	41.80	m
IFO capacity (85%)	802	m ³
MDO capacity (85%)	39	m ³
MGO(LS) cap. (85%)	257	m ³
FW capacity (100%)	286.00	m ³
Ballast cap. (100%)	16765	m ³
Slop tanks (CH wash)	274	m ³

Operational restrictions

No mixing of new bunkers with bunkers already onboard.
Vessel is only allowed to work single hook on a single hatch
Constants could be affected due to vessel retaining onboard of hold cleaning water and/or grey water as per MARPOL regulations.

Bunker tank capacities could be affected due to vessel having to keep different IFO and ULSD grades separated as a consequence of compliance with Marpol regulations a/o EU directives a/o USA a/o any other national regulations including latest amendments.

This vessel is member of an independent fuel testing system (LINTEC). Charterers or their representatives are always at liberty to witness the sampling during any bunkering of the vessel under the charter and any discrepancies found between suppliers sample and Lintec sample then the Lintec sample to be final and binding. As long as the Lintec test of the fuel oil onboard has not been completed and the results approved vessel may have to use LSMGO instead

Cargospaces

Cap. (ft³)	Grain	Bale
C/H #1	272413	261515
C/H #2	396573	380710
C/H #3	386477	371019
C/H #4	396845	380971
C/H #5	343551	329810
Total	1795860	1724025

Floor space	LxBf/Ba/H(m)	Hatch Size
Cargohold #1	25.44x4.21/19.42x13.8	9.6x20.8/6.4x16.2
Cargohold #2	27.87x26.94x13.8	20.00x27.00
Cargohold #3	27.06x26.93x13.8	20.00x27.00
Cargohold #4	27.86x26.94x13.8	20.00x27.00
Cargohold #5	27.93x24.90/4.56x13.8	20.00x27.00

draft(m)	Deadweight(t)
10.52	Summer 38916.9
10.75	Fresh 40141.8
10.74	Trop 40098.5
10.97	TropF 41326.3
10.30	Winter 37738.2

Ventilation	Nat.
Airchanges	-
CO2 fitted	Fitted
A60 bkhd	Fitted
Smoke det.	Fitted
Aussie fitted	Fitted
Dehumidifier	N/A

*Note: In case of heavy cargoes to be loaded, the maximum quantity is to be in accordance with vessel's loading and stability booklets.

Strength

	CH#1	CH#2	CH#3	CH#4	CH#5		
Hatchcovers	3	3	3	3	3	t/m ²	*Not designed for cargo
Weatherdeck	3	3	3	3	3	t/m ²	*Except betw. hatches
Tanktop	25	25	25	25	25	t/m ²	*Local strength
Max. Mass	5900	8500	8300	8500	7400	t/m ²	*Homogeneous loading
Steel coils	Standard coil loading: 20 T coils x 2 tiers (dimensions 2.0m x 1.8m) x 3 dunnages.*						
*Note: Alternate hold loading condition (Nos. 2 & 4 may be empty)							
*Note2: Other Coil loading condition are subject to owners approval of local stress calculations.							

Deck equipment

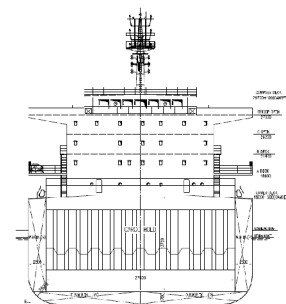
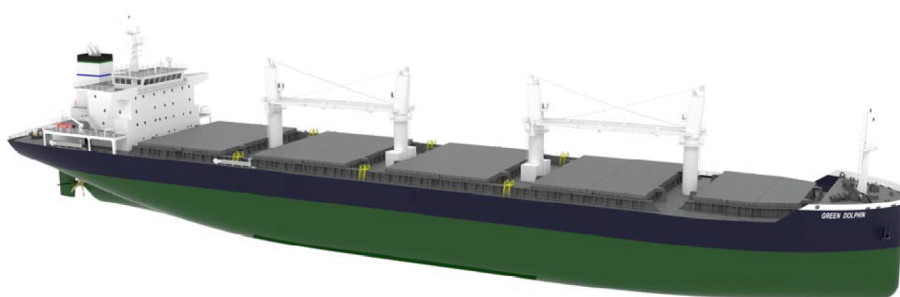
Hatch type	Hydr. End-folding type, DS
Maker	TTS
Cargo gear type	Electro hydr. 30t x 4 cranes
Maker	MHI
Outreach	10.00 mtr
Grab handling	24 T max. grab+cargo
Grabs fitted	3 x 10 M ³ remote controlled

Features

ITF fitted	National flag
Log fitted	No
WBTS fitted (AMS approved)	Yes
Lakes fitted	No
Suitable for grab discharge	Yes

Machinery details

Main engine	MAN B&W 5S50ME-B9.3
CSR	4575 KW @ 89.9 rpm
Aux. engines	Yanmar 6 EY18ALW – 3 sets
Electrical	600KW/ 450V/ 50 Hz
Freshwater generator	Max. 10t/day



All details "about" given in good faith, without guarantee.

