

MV: CRYSTAL CONFIDENCE

General

Class	NKK
Class notation	BCM BC-XII,GRAB
Ship type	DHBC
Year built	FEB 2016
Yard	Namura Imari
DD due	FEB 2021
SS due	FEB 2021

Flag	Philippines
Registry	Manila
Reg. nr.	MNLA000827
Call Sign	DUIB
IMO nr.	9728382
Telex	454893610
Phone	+870 7734 08229
Email	crystalconfidence@amosconnect.com

Speed & Consumption

Laden	abt. 13.0 kts on abt. 21.5 IFO + abt. 0.1 mt LSMGO
Eco (WOG)	abt. 12.0 kts on abt. 19.5 IFO + abt. 0.1 mt LSMGO
Port Idle	abt. 2.0 mt IFO + abt. 0.1 mt LSMGO
Port WWW	abt. 4.5 mt IFO + abt. 0.1 mt LSMGO

Vessel consumes LSMGO when manoeuvring and sailing in narrow waterways and canals. Speed / Cons. upto Windforce BF 4 / Douglas sea state 3, basis no adverse current and on even-keel condition.
Bunker specs: IFO ISO 8217:2017 (E) RMG 380 / LSMGO: ISO 8217:2017 (E) DMA (max 0.1% Sulphur)
Sulphur specs and each delivery and burning of specific types (grades) of bunkers always to comply with MARPOL regulations a/o EU directives a/o USA a/o any other national regulations including latest amendments.

Principal dimensions

Length over all	179.96	m
Breadth moulded	30.00	m
Depth moulded	14.05	m
Summer draft	9.80	m
Summer dwt	34.874	MT
TPC (summer)	48.1	t/cm
GT/NT	21545/11189	T
Lightweight	7783	T
Suez	21844/19726	T
Panama	17940	T

W/L-H/c Summer	5.70	m
W/L-H/c Ballast mid.	10.15	m
Keel – Top H/c	15.75	m
Keel – Top of mast	40.90	m
IFO capacity (85%)	898	m ³
MDO capacity (85%)	60.00	m ³
MGO capacity (85%)	273.50	m ³
FW capacity (100%)	211	m ³
Ballast cap. (100%)	14664	m ³
Slop tanks (CH wash)	198	m ³

Operational restrictions

No mixing of new bunkers with bunkers already onboard.
Vessel is only allowed to work single hook on a single hatch
Constants could be affected due to vessel retaining onboard of hold cleaning water and/or grey water as per MARPOL regulations.

Bunker tank capacities could be affected due to vessel having to keep different IFO and ULSGO grades separated as a consequence of compliance with Marpol regulations a/o EU directives a/o USA a/o any other national regulations including latest amendments.

This vessel is member of an independent fuel testing system (LINTEC).
Charterers or their representatives are always at liberty to witness the sampling during any bunkering of the vessel under the charter and any discrepancies found between suppliers sample and Lintec sample then the Lintec sample to be final and binding. As long as the Lintec test of the fuel oil onboard has not been completed and the results approved vessel may have to use LSMGO instead

Cargospaces

Cap. (ft³)	Grain	Bale
C/H #1	215923	213606
C/H #2	345670	335249
C/H #3	345674	335369
C/H #4	345674	335369
C/H #5	304415	295816
Total	1557356	1515409

Floor space	LxBf/Ba/H(m)	Hatch Size
C/H #1	26.3x6.0/26.0xtba	14.05x14.20
C/H #2	28.90x26.00	20.40x20.40
C/H #3	28.90x26.00	20.40x20.40
C/H #4	28.90x26.00	20.40x20.40
C/H #5	27.2x26.0/8.8xtba	20.40x20.40

drft(m)	Deadweight(t)
9.82	Summer 34874
10.03	Trop. 35857
10.25	TropF. 35836
10.04	Fresh 34873
9.62	Winter 33894

Ventilation	Nat.
Airchanges	-
CO2 fitted	Fitted
A60 bkhd	Fitted
Smoke det.	Fitted
Aussie fitted	Fitted
Dehumidifier	N/A

*Note: In case of heavy cargoes to be loaded, the maximum quantity is to be in accordance with vessel's loading and stability booklets.

Strength

	CH#1	CH#2	CH#3	CH#4	CH#5		
Hatchcovers	2.5	2.8	3.2	3.2	3.2	t/m ³	*observe load manual
Weatherdeck	4.0	4.0	4.1	4.1	4.1	t/m ³	*Except betw. hatches
Tanktop	20	20	20	20	20	t/m ³	*Local strength
Tanktop	20.47	11.81	20.50	11.81	16.67	t/m ³	*Uniform distributed
Steel coils	Standard coil loading condition – 2 tiers x 15 T coils (dim. W1.5m x L1.5m) 3 dunnages						

*Note 1: Alternate hold loading condition (Nos. 2 & 4 may be empty)
*Note 2: Other coil loading conditions subject to owners approval of local stress calculations

Deck equipment

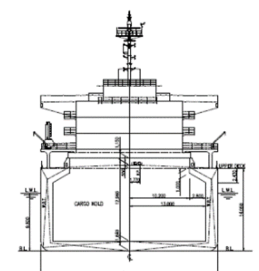
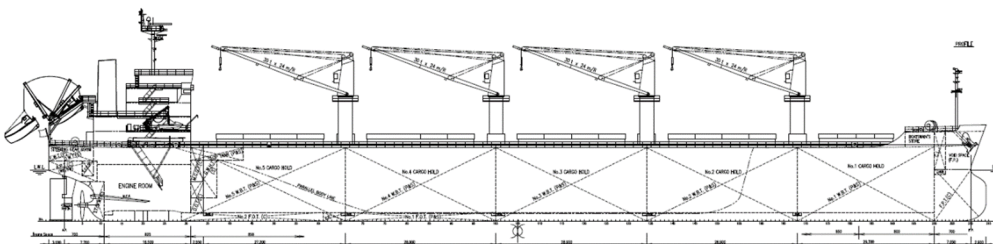
Hatch type	Hydr. End-folding type, DS
Maker	Genkai
Cargo gear type	Electro hydr. 30t x 4 cranes
Maker	IHI
Outreach	9.00 mtr
Grab-fitted	3 x 10 cubm remote controlled
Grab handling	24t max.

Features

ITF fitted	National flag
Log fitted	No
WBTS fitted (AMS approved)	Yes
Lakes fitted	No
Suitable for grab discharge	Yes

Machinery details

Main engine	MAN B&W 6S46ME-B8.3
NCO	4860 KW @ 104.2 rpm
Aux. engines	Yanmar 6 EY18ALW – 3 sets
Electrical	625KVA/ 450V/ 60 Hz
Freshwater generator	Max. 15t/day



All details "about" given in good faith, without guarantee.